



EVENTS: GENERAL CONDITIONS OF ENTRY 2021-22

TO BE READ IN CONJUNCTION WITH THE RELEVANT
EVENTS CONDITIONS OF ENTRY

Version 1.0

As at 1 July 2021

Contents

SECTION 1: DEFINITIONS.....	4
New South Wales Touch Association Tournaments and Events	4
Organisation.....	4
Affiliate	4
Unaffiliated Competitions	4
Invitational Team	4
Affiliate Coordinator	4
Referees Coordinator.....	4
Officials	4
Volunteers	4
Doping Policy	5
Member Protection Policy	5
Like Competitions.....	5
Interstate Player	5
Junior Player.....	5
Touch Football Australia	5
Agreement to Enter NSWTA Events	6
SECTION 2: RESPONSIBILITIES.....	7
Players Responsibilities	7
Affiliate Responsibilities.....	7
NSWTA Responsibilities.....	8
Officials and Referees	9
SECTION 3: REQUIREMENTS	11
Player Eligibility.....	11
Player Points System Determinations	16
Player Points System Definitions.....	16
Player Points Value	20
Proof of Age	23
Coaches & Managers Eligibility	23
Referees Eligibility.....	23
SECTION 4: UNIFORMS.....	24
Quality	24
SECTION 5: WORKING WITH CHILDREN	27
Working with Children Check (WWCC).....	27
Guardianship.....	27
Supervision of Under Age Participants.....	27
SECTION 6: IMAGES	28

SECTION 7: DIVISIONS AND CATEGORIES	28
SECTION 8: LATE ENTRY AND REFUNDS	30
SECTION 9: TEAM REGISTRATION.....	30
SECTION 10: AFFILIATE ENQUIRIES	30
SECTION 11: EVENT OPERATIONS	31
Teams	31
Number of Teams.....	31
Affiliate Coordinator/Team Management Responsibilities	31
Insurance.....	31
Control of the Event.....	31
Match Balls.....	31
Competition Points.....	31
Affiliate Championship Points	32
Duration of Games	32
Field Layout.....	32
Trophies.....	32
Presentation.....	32
Tents	32
Player Numbers.....	33
Draw Formula.....	33
Delay of Match & Forfeits.....	33
First Forfeit.....	33
Second Forfeit.....	34
Forfeit Affected Positions.....	34
Determining Positions for Finals Series.....	34
Final Series	36
Medical	36
Blood Bin.....	36
Concussion.....	36
Force Majeure.....	37
Weather	37
SECTION 12: RULES	39
Drop Off Procedure.....	39
Substitution and Interchange Area	39
Coach and Referee Communication- Mutual Respect Policy	40
Send Offs.....	41
Sin Bins	41
Interception Rule.....	Error! Bookmark not defined.
SECTION 13: PROTEST, DISPUTES and DISCIPLINE.....	42

SECTION 14: SPONSORSHIP AND LOGO DISPLAY	43
Affiliate Uniforms.....	43
Other Usage of Logos & Banners.....	43
SECTION 15: MERCHANDISING.....	43
SECTION 16: TRAVEL ARRANGEMENTS	43
SECTION 17: DOPING POLICY.....	43
SECTION 18: BREACHES OF RESPONSIBILITY	44
SECTION 19: RECOMMENDATIONS.....	44
SECTION 20: POLICIES.....	45
Item 1: Member Protection Policies	45
Item 2: Legal Guardianship Issues.....	45
Item 3: Supervision of Under Age Players	46
Item 4: Child Protection.....	46
Item 5: Water Safety.....	46
Item 6: Food Handling	46
Item 7: Images, Video Footage & Social Media.....	46
Item 8: Unaffiliated Rule.....	47

SECTION 1: DEFINITIONS

A	New South Wales Touch Association Tournaments and Events
	The New South Wales Touch Association (NSWTA) conducts a number of tournaments throughout the year. These are the Junior State Cup, Junior Regionals, Vawdon Cup, Country Championships and State Cup. This also includes regional, affiliate and like events that have endorsement from the NSWTA. These events are the prime vehicle in the Talent Identification and Selection processes for NSWTA Representative Teams at all levels.
B	Organisation
	New South Wales Touch Association (NSWTA) is the state peak body for the sport of Touch and controlling Body of the sport in NSW.
C	Affiliate
	Affiliate means a local entity that conducts and/or administers Touch Football or Touch Football competitions and is a Member of New South Wales Touch Association (NSWTA).
D	Unaffiliated Competitions
	Means an entity that conducts and/or administers Touch Football or Touch Football competitions and is NOT a Member of New South Wales Touch Association (NSWTA). These include but not limited to the following: <ul style="list-style-type: none"> • National Touch Rugby Association (NTRA) • Touch Rugby League (TRL) • Other locations and organisations known as Unaffiliated Competitions
E	Invitational Team
	An Invitational Team is a team that has been invited to compete at an event. When competing at the event an invited team is subject to all General Conditions, Conditions of Entry, Policies and Guidelines as implemented by NSWTA to conduct the Tournament.
F	Affiliate Coordinator
	The person appointed by the Affiliate to act on behalf of the Affiliate; responsible for liaising with NSWTA relating to the Affiliate and the event(s) they have entered. It is recognised that the Affiliate Coordinator has the delegated authority of the Affiliate and can make decisions including financial ones without consultation.
G	Referees Coordinator
	The person appointed by the Affiliate to act on behalf of the Affiliate, responsible for liaising with NSWTA relating to the Affiliate's Referees and the event(s) they have entered.
H	Officials
	Officials are Referees, Coaches, Assistant Coaches, Team Managers, Assistant Team Managers, Tour Managers, Assistant Tour Managers, Sports Trainers, Physiotherapists, Doctors, Association Administrators, and any other person appointed to a position of responsibility in an Affiliate or a NSWTA event.
I	Volunteers
	Are persons, whether they be members of the Association or not, who volunteer to assist with the running of an event. They are also recognised as officials of an event.

J	Doping Policy
	The NSWTA Doping policy is the adopted policy determined by the TFA Board of Management (BOM) from time to time, which relates to TFA's position on all doping practice matters. The NSWTA conforms to this policy.
K	Member Protection Policy
	The NSWTA Member Protection Policy is endorsed by the NSWTA Board and relates to NSWTA's position on all behavioural matters of participants at NSWTA controlled events or representative team members and is listed under the General Conditions. The NSWTA has adopted the TFA Member Protection Policy which operates in conjunction with the NSWTA Member Protection Policy. For the purpose of this document 'Member Protection Policy' refers and reference both policies.
L	Like Competitions
	Competitions that are recognised by the NSWTA as competitions equal/equivalent to/of representative competitions in NSW. <ul style="list-style-type: none"> • ACT – Super Series • Victoria – VT League, State Championships • Tasmania – State Championships • South Australia – TFSA League • Western Australia – State Championships • Northern Territory – DP Premier League, State Championships • Queensland – Metro Cup, Junior State Cup, Junior State Championships, State Cup <p>And/or any other competitions deemed by the NSWTA to fall into this category including international competitions.</p>
M	Interstate Player
	A player who is regularly domiciled at a residential address outside the NSW state borders.
N	Junior Player
	A player aged 17 or younger who is still eligible to participate in a Junior or Youth division/event.
O	Touch Football Australia
	Touch Football Australia (TFA) is the national governing body of the sport.
P	Cluster
	A group of affiliates within a defined region as guided by NSWTA.
Q	Family Exemption
	For the purpose of a source of exemption the NSWTA defines 'family' as parents or legal guardian or siblings.

1.1	Agreement to Enter NSWTA Events
1.1.1	To abide by the NSWTA General Conditions of Entry, each relevant event's Conditions of Entry documents and all NSWTA policies and bi-laws.
1.1.2	To meet their financial obligation to the NSWTA, both as an Affiliate and for the event entered by the timelines outlined in the Conditions of Entry for the event entered.
1.1.3	To market the sport of Touch Football professionally and to allow NSWTA to use the Affiliate's brand and reputation.
1.1.4	To attend all NSWTA functions where required. Non-attendance by mutual consent is acceptable.
1.1.5	To complete all competitive requirements of the NSWTA event entered including all finals and play off matches as outlined in the Conditions of Entry.
1.1.6	To ensure that all compliance matters required under the NSWTA Affiliate Regulations have been met prior to the entry into the event.
1.1.7	To lodge with the NSWTA, on behalf of their members any Pool Player nomination entries that is in accordance with the eligibility and timelines outlined in the Conditions of Entry for the event entered.
1.1.8	To comply with any requirement outlined in the General Conditions or the Conditions of Entry documents for the provision of officials for the event entered.
1.1.9	Not to finalise any sponsorship arrangements that the Affiliate intends to obtain and use in the promotion of a NSWTA event or during the running of a NSWTA event until NSWTA provides the Affiliate authorisation to do so. A minimum time frame will be put in place to allow for effective consultation. This is to eliminate any sponsorship conflicts that could cause concern for both the Affiliate and the NSWTA.
1.1.10	To abide by any Licence regulations put in place by the NSWTA in relation to the organisation's brand.
1.1.11	That an appropriate penalty determined by the NSWTA will be incurred for failure to comply with any of the above items (Clauses 1.1 to 1.1.10 inclusive)
1.1.12	In addition to the above penalty , failure to comply with Clause 1.1.2 will mean that the Affiliate will be unable to participate further in NSWTA events until such time until all financial requirements are fulfilled.
1.1.13	Abide by any addendum or changes to event conditions as applied by the NSWTA due to changes in COVID-19 restrictions and or Public Health Orders.

SECTION 2: RESPONSIBILITIES

2.1	Players Responsibilities
2.1.1	To abide by the NSWTA General Conditions of Entry, each relevant event's Conditions of Entry documents and all NSWTA policies and bi-laws.
2.1.2	To complete a Membership and Participant Declaration through NSWTA online player registration process.
2.1.3	To play to the best of their ability at all times.
2.1.4	To behave at all times in a manner that does not bring NSWTA, the Affiliate or the Sport into disrepute as per NSWTA's constitution and Member Protection Policy. Failure to comply with this clause may see the player being subject to Penalty.
2.1.5	To be available at all reasonable times for the media and promotion as requested by their Affiliate or NSWTA.
2.1.6	If required when attending a function/media request on NSWTA duties to wear the official uniforms supplied by the Affiliate, NSWTA and or TFA as requested by NSWTA.
2.1.7	Attend all NSWTA meeting/judiciary/disciplinary hearing requests as required.
2.1.8	To abide by the Member Protection Policy and NSW Touch Social Media Policy as outlined in the General Conditions document.
2.1.9	To make themselves available as a first choice for NSWTA State of Origin teams and NSWTA Regions. Failure to do so will deem the player ineligible for Home Grown or Long-Term player status.
2.1.10	Abide by any addendum or changes to event conditions as applied by the NSWTA due to changes in COVID-19 restrictions and or Public Health Orders.
2.2	Affiliate Responsibilities
2.2.1	To gain entry to a NSWTA event, Affiliates will respond within the required timelines as per the Conditions of Entry for the event they wish to enter and be compliant in all required areas.
2.2.2	Ensure all financial responsibilities in relation to affiliation and event entry have been met.
2.2.3	Promote Touch Football to their local community. Maintain a community engaging domestic social touch football competition open to all potential participants. Regularly undertaking activities to grow the said competition whilst upholding high reputation and integrity.
2.2.4	Establish a best practice governance and administration structure. Ensure the Affiliate is protected under Incorporation and up to date with the Department of Fair Trading or relevant statutory bodies.
2.2.5	Develop a Technical Development Program. Affiliates undertake to run as a minimum one (1) referee accreditation course per annum for their domestic competition. As part of the new State Technical Development Plan to aid affiliates with referee recruitment and retention at their Affiliate, all referees will be required to nominate their one (1) representative affiliate for the 2021-22 NSWTA event period at the time of online registration . Please check each event's Conditions of Entry for further Referee Nomination details.
2.2.6	Submit to NSWTA by the closing dates outlined in the relevant Conditions of Entry of the NSWTA event entered:

	<ul style="list-style-type: none"> List of all un-financial players and suspended players; Working With Children Check member database; Statutory Declaration <p>The Statutory Declaration form is a legal document to validate that all players, referees, officials and team management qualify under the General Conditions and Tournament Conditions to participate in the event must be submitted to NSWTA.</p>
2.2.9	Ensure all referees, coaches, officials have undertaken and achieved the minimum accreditation level requirements for the event they have entered for their entry to be accepted.
2.2.10	<p>Ensure that the team(s) representing the Affiliate are in the official set of uniform that has been registered and approved with the NSWTA.</p> <p>Uniform Submission All Affiliate uniforms must be submitted within the timelines indicated in each relevant event's Conditions of Entry via the Uniform Submission Form to the Events Team. For the full details on ensuring uniform compliance is met, please refer to Clause 4.1.2. All uniform submissions must comply with any NSWTA Licencing regulations that are in place for the event that Affiliates have entered.</p>
2.2.11	<p>Appointment of Affiliate Coordinator and Referee Coordinator for the event entered. The Affiliate Coordinator is responsible for being the primary liaison between the Affiliate and the NSWTA. The Referee Coordinator is responsible for liaising with NSWTA relating to the Affiliate's referees.</p>
2.2.12	<p>Final Team Submission Team registrations, playing roster (including new players), dispensation requests, and full team payments must be finalised and lodged on the dates advised in the Conditions of Entry for each event. Pool player requests are to be made in conjunction with the relevant event's timelines.</p>
2.2.13	<p>Communication Each Affiliate Coordinator must submit an email address and mobile phone number for themselves, the Referee Coordinator and each team nominated. All correspondence during the tournament will be sent out via the nominated email addresses. It is the responsibility of the Affiliate Coordinator to ensure all provided email addresses do not have errors in spelling.</p> <p>A request for a decision or ruling is to be quantified in or by writing to the NSWTA.</p>
2.2.14	Ensure that the Affiliate's Players and Officials have been instructed on the Member Protection Policy and are aware of their responsibilities. Failure of the Affiliate to comply with this clause may see the Affiliate being subject to Penalty.
2.2.15	Any use of NSWTA/TFA logos must first receive written authorisation from the NSWTA and adhere to the clauses outlined in the NSWTA Licencing regulations and or NSWTA Visual Guidelines.
2.2.16	To behave always in a manner that does not bring the Sport into disrepute.
2.2.17	To attend all relevant NSWTA meetings, judiciaries, disciplinary hearings and functions and media calls as required.
2.2.18	Abide by any addendum or changes to event conditions as applied by the NSWTA due to changes in COVID-19 restrictions and or Public Health Orders.

2.3	NSWTA Responsibilities
2.3.1	Plan and develop the State Competitions Calendar including leading and administrating each NSWTA event.
2.3.2	<p>Determine policy regarding financial matters affecting the competition including:</p> <p>(a) Centrally controlling income such as TV revenue, Major Corporate sponsors, naming rights, licencing and sponsorship;</p> <p>(b) Any financial disciplines to be imposed on Affiliates.</p>

2.3.3	Setting the standard of grounds, field markings and facilities at which the NSWTA event will be played at.
2.3.4	Determine the program of matches to best showcase the sport through digital media's promotion and broadcast of the event.
2.3.5	Establish the systems for determining the winners at the end of the NSWTA event.
2.3.6	Keep Affiliates up to date with current trends and information. Formulate a process for Affiliates to express their concerns and comments on any matter. A request for a decision or ruling is to be quantified in writing by NSWTA to the Affiliate.
2.3.7	Establish an appropriate program preventing the practice of "stacking" of teams to ensure that a steady flow of players is available for all affiliates.
2.3.8	The NSWTA to supply all required pro-forma documents to Affiliates.
2.3.9	To distribute pool player lists in accordance with the event timelines. Final ratification of all teams is to be made prior to commencement of the tournament and in liaison with all associated bodies.
2.3.10	Set guidelines in place for the potential introduction of new Affiliate or mergers of existing affiliates to include but not limited to: (a) Demonstrated playing strength. (b) Plans in each affiliate that align to the NSWTA Strategic Plan. (c) Demonstrated geographical area. (d) Demonstrated added value to the competition and any adverse effects on the existing
2.3.11	Determine the judicial procedures of the NSWTA event.
2.3.12	To abide by the Member Protection Policy and Social Media Policy.
2.3.13	To ensure match results are updated on the NSWTA Event Website and NSWTA App at the completion of each competition round.
2.3.14	Advise all of any addendum or changes to event conditions as applied by the NSWTA due to changes in COVID-19 restrictions and or Public Health Orders.
2.4	Officials and Referees
2.4.1	To abide by the NSWTA General Conditions of Entry, each relevant event's Conditions of Entry documents and all NSWTA policies and bi-laws.
2.4.2	To officiate and always perform to the best of their ability.
2.4.3	To behave always in a manner that does not bring NSWTA, the Affiliate or the Sport into disrepute as per NSWTA's constitution and Member Protection Policy. Failure to comply with this clause may see the Official or Referee being subject to Penalty.
2.4.4	To be available at all reasonable times for media and promotions as requested by their Affiliate or NSWTA.
2.4.5	If required when attending a function/media request on NSWTA duties to wear the official uniforms supplied by the Affiliate, NSWTA and or TFA as requested by NSWTA.
2.4.6	To abide by the Member Protection Policy and Social Media Policy.
2.4.7	All officials must have minimum level accreditation to the appointed position. Referees must wear the official referee uniform as identified in the event's referee information booklet.

2.4.8	To enforce all event specific clauses outlined in the event's Conditions of Entry relating to games. Including the Mutual Respect Policy and procedure.
2.4.9	To complete all reports within the required timeframes
2.4.10	To attend all relevant NSWTA meetings, judiciaries, disciplinary hearings and functions and media calls as required.
2.4.11	For the Referee Coordinator to liaise and cooperate with the NSWTA State Referees Director and NSWTA Events Team including weekend and weekly event appointments.
2.4.12	Referees must be registered and participating with your Affiliate for Eligibility and Insurance purposes and must be regularly officiating at your Affiliate in the Current Competition or Previous Competition.
2.4.13	Abide by any addendum or changes to event conditions as applied by the NSWTA due to changes in COVID-19 restrictions and or Public Health Orders.

SECTION 3: REQUIREMENTS

3.1	<p>Player Eligibility</p> <p>The onus to prove that a player is registered and participating in their competition is on the Affiliate. Upon a protest or report, an Affiliate found to be using a player that they cannot verify complies with this condition, to the satisfaction of the NSWTA, is liable to have the team and/or the player disqualified from the tournament.</p> <p>PLEASE NOTE Eligible competition seasons for each event is defined by the Current or Previous Season, as outlined below and defined by Clause 3.1.15.</p> <table style="width: 100%; border-collapse: collapse;"> <thead> <tr> <th style="text-align: left;">2021 Competitions</th> <th style="text-align: left;">Previous Season</th> <th style="text-align: left;">Current Season</th> </tr> </thead> <tbody> <tr> <td>Vawdon Cup</td> <td>Season 2 2020</td> <td>Season 1 2021</td> </tr> <tr> <td>Country Championships</td> <td>Season 2 2020</td> <td>Season 1 2021</td> </tr> <tr> <td>State Cup</td> <td>Season 1 2021</td> <td>Season 2 2021</td> </tr> <tr> <th style="text-align: left;">2022 Competitions</th> <th style="text-align: left;">Previous Season</th> <th style="text-align: left;">Current Season</th> </tr> <tr> <td>Junior State Cup</td> <td>Season 2 2021</td> <td>Season 1 2022</td> </tr> <tr> <td>Junior Regionals</td> <td>Season 2 2021</td> <td>Season 1 2022</td> </tr> </tbody> </table> <p>Extenuating issues that may affect the running of an Affiliate competition (such as venue and seasonal issues) will be considered upon application to NSWTA.</p> <p>This clause is also applicable to all Affiliate and Region hosted tournaments and events.</p>	2021 Competitions	Previous Season	Current Season	Vawdon Cup	Season 2 2020	Season 1 2021	Country Championships	Season 2 2020	Season 1 2021	State Cup	Season 1 2021	Season 2 2021	2022 Competitions	Previous Season	Current Season	Junior State Cup	Season 2 2021	Season 1 2022	Junior Regionals	Season 2 2021	Season 1 2022
2021 Competitions	Previous Season	Current Season																				
Vawdon Cup	Season 2 2020	Season 1 2021																				
Country Championships	Season 2 2020	Season 1 2021																				
State Cup	Season 1 2021	Season 2 2021																				
2022 Competitions	Previous Season	Current Season																				
Junior State Cup	Season 2 2021	Season 1 2022																				
Junior Regionals	Season 2 2021	Season 1 2022																				
3.1.1	<p>Must be registered online into the National Database (via MySideline), participating and financial member within their chosen NSWTA Affiliate(s) having participated in a minimum of five (5) domestic competition games in one (1) division in the Current Affiliate competition or Previous Affiliate Competition.</p> <p>NSWTA will only consider a player's registration as valid from the date that is shown online within the Affiliate's competition database.</p> <p>All players who are defined as an interstate player and wishing to participate at NSWTA events must make themselves available for NSW selection. Refer to Clause 3.1.1.</p>																					
3.1.2	<p>The minimum standard for the NSWTA is that of a weekly competition running no less than ten (10) weeks. Eligibility can only be gained based on one (1) round per week. The staging of qualification knockouts, tournaments or competitions over a three-day weekend or successive weekends does not qualify the player to meet the 5 game criteria outlined in Clauses 3.1.1 and 3.1.2.</p>																					
3.1.3	<p>All Affiliate and Region tournaments and events must be governed under the rules and regulations as identified in the NSWTA Affiliate Regulations and associated NSWTA policies and bi-laws.</p>																					
3.1.4	<p>Affiliates are to identify all new/imported players that are registered with the affiliate for the event they have entered (List any player that has not played with the team at the last NSWTA event which that affiliate entered, identify their current affiliate status and their home affiliate status and points value).</p> <p>The form is to be signed by the Affiliate Coordinator confirming that the player(s) have completed all the requirements of being both financial and meets the conditions of Clauses 3.1.1 and 3.1.2.</p>																					
3.1.5	<p>If a player wishes to participate in a NSWTA event and the Affiliate in which they are registered has not nominated a team they are eligible to play in their affiliate must register them through the Pool Player application process. The process to potentially participate will include verification from NSWTA to the affiliate and will be via a draft/pool system.</p>																					
3.1.6																						

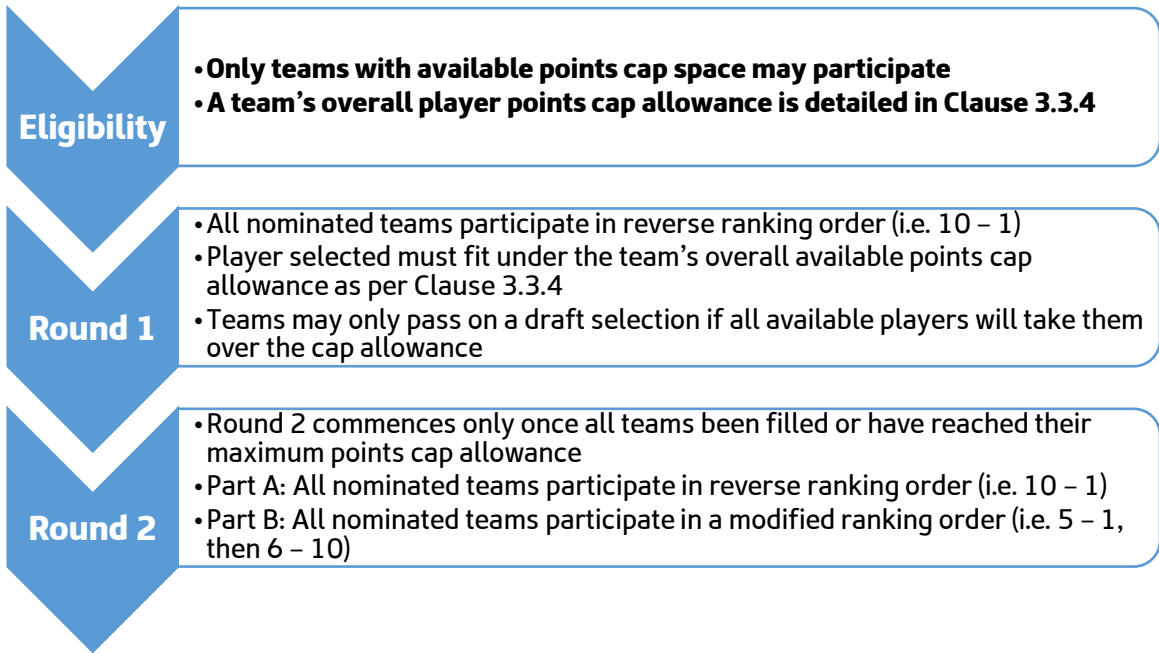
3.1.7	<p>Consideration may be given to players from developing states to enter the Players Pool on written application to the Events Team. This must be received at least six weeks prior to the Event and will only be considered with endorsement from the player's state/national governing body.</p>
3.1.8	<p>Any individual being declared un-financial or serving a suspension with an Affiliate, Region or NSWTA is not eligible to enter any NSWTA events.</p> <p>Any Affiliate conducting a competition not registered with NSWTA is not eligible to enter NSWTA events.</p> <p>Any Coach/Manager/Player/Official who participates in any Touch Football competition not affiliated with NSWTA or Touch Football Australia (therefore being unaffiliated) may be ineligible to participate in a NSWTA event. They may still participate at domestic NSWTA Affiliate competitions, but not at NSWTA representative events.</p> <p>Please remind all Coach/Manager/Player/Officials that all NSWTA tournaments are governed by the Unaffiliated Rule, which states:</p> <p><i>"IF A PLAYER, REFEREE, OFFICIAL ETC. PARTICIPATES IN AN UNAFFILIATED COMPETITION, REGARDLESS OF WHETHER THEY ALSO PLAY IN AN AFFILIATED COMPETITION, THEY MAY BE INELIGIBLE TO PARTICIPATE IN A NSWTA OR TFA TOURNAMENT FOR A PERIOD OF 12 MONTHS".</i></p>
3.1.9	<p>PLAYER DRAFT/POOL PROCESS</p> <p>The draft/player pool process exists to give these individuals the opportunity to participate, however with some safeguards. It operates in two (2) sections:</p> <ul style="list-style-type: none"> • Section 1 (Draft)– Vawdon Cup Premier League & State Cup Open A Division, • Section 2 (Pool)– Vawdon Cup Division 1 and below, State Cup Open B and below, Age Divisions in Vawdon Cup and State Cup, all Country Championships & all Junior State Cup divisions. <p>NSWTA currently operate a Player Points System for Opens and 20's divisions and give careful consideration as to how the player pool draft should operate in this manner.</p> <p>A key component to having a draft under the Points System is that all teams have a points limit so that teams cannot tamper with this limit in an effort to gain an unfair advantage by having players placed in the pool, then to draft them to inflate their team's points value at the expense of others. Importantly we have considered that the ideal and premise of the points system is to produce a fair, equitable and level playing field across all teams.</p> <p>Therefore, a player nominated by an Affiliate cannot be reselected by that affiliate. If the player is not selected by any other affiliate, they remain unattached to any team.</p> <p>Any players wishing to register for the Player Draft/Pool must have their nomination received by the prescribed date for the event in which they wish to participate. In Open's categories they can indicate which division(s) they wish to be eligible for. Affiliates/teams in the nominated division will be contacted via email to express interest in the player by the prescribed date for the event in which they wish to participate.</p> <p>Where an Affiliate has chosen to not send teams in certain divisions, they then must assist players looking to participate to lodge an application to enter the pool. This provides access for participation for members who to still participate at the event.</p> <p>In this case, the only way that an Affiliate can stop a participant accessing the pool is for financial liabilities or being under suspension at an Affiliate. Players and Affiliates can contact NSWTA directly for clarification this matter.</p> <p>Players Passing Selection</p> <p>Any player selected at any stage who does not wish to participate for that particular team will not be allowed to participate for any team and acceptance in any future draft opportunities for that event will be at the discretion of the NSWTA.</p>

Team Passing Selection

A team will not be able pass on a draft selection at any stage of the draft. If they do so, they will no longer be able to participate further in the draft.




Section 1 – Vawdon Cup Premier League Divisions & State Cup Open A Divisions

3.1.10



Once drafted or pool allocated a player may remain with that Affiliate with their points value added. As such, that Affiliate would not be eligible for any further imports/drafts until their points total is under the points cap applicable. The drafted player must however meet player eligibility for future events should they wish to remain with that team/affiliate.

N.B. Rules in **Clause 3.1.9** in relation to **Players Passing Selection** and **Teams Passing Selection** apply here.

<p>3.1.11</p>	<p>Section 2 – State Cup Open B Championship and below Divisions, Vawdon Cup and State Cup Age Divisions, all Country Championships Divisions, all Junior State Cup Divisions</p> <div style="display: flex; flex-direction: column; align-items: flex-start;"> <div style="margin-bottom: 10px;">  <p>Eligibility</p> <ul style="list-style-type: none"> • Only teams in divisions other than Open A Category or Premier League may participate </div> <div style="margin-bottom: 10px;">  <p>Round 1</p> <ul style="list-style-type: none"> • The preference is to match players to Affiliates within their own Cluster and then Region • If more than 1 team within a Cluster/Region is seeking a player(s), an even spread of players will be facilitated • If teams are ranked, this process will occur in reverse ranking order (i.e. 10-1) </div> <div>  <p>Round 2</p> <ul style="list-style-type: none"> • If players cannot be matched with a team from their Region, they will be matched with a team from outside their Region • On all occasions, NSWTA will attempt to facilitate an even spread of players • If teams are ranked, this process will occur in reverse ranking order (i.e. 10-1) </div> </div> <p>N.B. Rules in Clause 3.1.9 in relation to Players Passing Selection and Teams Passing Selection apply here.</p>
<p>3.1.12</p>	<p>Any Affiliate wishing to access the Player Draft/Pool can only access a maximum of three (3) players per division in Round 1 of the draft.</p>
<p>3.1.13</p>	<p>Under this system as the onus is on the Affiliate to verify that the players meet all the requirements. An Executive Committee member must submit all players who wish to go into the player pool. Once submitted this will be validated by NSWTA and the affiliate on their eligibility.</p>
<p>3.1.14</p>	<p>Any new Affiliate who is granted application to join the NSWTA must abide by the New Affiliate representative transfer rule. That is any player/coach or referee that is deemed by the NSWTA to be an incumbent representative of an existing NSWTA Affiliate will not be able to transfer to represent the new Affiliate until the completion of the full Season 1 or full Season 2 and having met the participation eligibility clause relevant to the NSWTA event. It will be determined, on each application, as to if Season 1 and/or Season 2 applies.</p>
<p>3.1.15</p>	<p>For the purpose of Clause 3.1.14, Season One (1) is any competition that commences between January 1 and June 30 of each year and Season Two (2) is any competition that commences between July 1 and December 31 each year. Any affiliate conducting a third (3) or subsequent season must seek eligibility clarification from the NSWTA.</p>
<p>3.1.16</p>	<p>Any Affiliate conducting a competition not registered with NSWTA is not eligible to enter NSWTA events. An Affiliate must register all competitions they conduct.</p>
<p>3.1.17</p>	<p>Any overage team or Junior State Cup team is allowed a maximum of 5 interstate players. These are players are domiciled outside of NSW that qualify for the Affiliate under Clauses 3.1.1, 3.1.2 & 3.1.3 however choose to represent another State or Territory.</p> <p>The exemption to this clause is where a player first represented the NSWTA as a State representative and has now moved interstate. N.B These players must still meet all the eligibility Clauses 3.1.1, 3.1.2 & 3.1.3.</p>

Junior Player Transfers

A Junior Player is defined as someone aged 17 or younger who is still eligible to participate in a Junior or Youth division/event.

An Affiliate has a maximum allowance of four (4) transfer opportunities for Junior Players per gender per annum. Per annum period is defined as **1 July to 30 June** of the following year (i.e. for 2020-21 NSWTA Events, this is from 2020 Vawdon Cup to 2021 Junior State Cup inclusively).

Affiliates **must** submit their nominated Junior Player Transfer list to the NSWTA Events Team prior to each event entered.

Once an Affiliate utilises all four (4) per gender of their Junior Player transfer allowance, they will be unable to import additional Junior players regardless if their transfer player(s) returns to their Home Affiliate or changes to another Affiliate throughout the defined period.

Exemption requests will be considered in the case of an established family (being Parent, Legal guardian and or sibling) history/lineage to an Affiliate in line with the “long-term status” clause outlined in **Clause 3.3.1**.

For clarity and the purpose of implementation of a source of exemption the NSWTA define ‘family’ in this clause as parents or legal guardian or siblings.

3.1.18

N.B. Should an affiliate be found to have breached the limit or gain exemption to breach to the limit- they will have the breach over the limited doubled and reduced from the following years available transfers and be ineligible for any exemptions in that year. Where a breach has been found to occur, the Affiliate will incur a \$1000 fine per breach

Players may only enter the JSC player pool in the Conference for which their Affiliate is eligible to participate in. Affiliates may only draft a player from the player pool of their Conference.

Junior Transfers and The Player Points System

The import points still apply to junior transfer players when they move into the senior divisions (including Youth Boys and Girls) to participate in the Vawdon Cup, Country Championships and State Cup.

Junior transfer players points are calculated at the time of their first Junior State Cup and go against an Affiliates **TOTAL** points.

A player who has joined the club under the Junior Transfer System to participate in Junior State Cup are not **NEW** points. It is important to note that the exemption from the inclusion of junior transfer players in **NEW** points only relates to those juniors that have transferred to their new Affiliate prior to 30 June, having represented in the previous or prior years Junior State Cup. Junior transfer players that transfer post 1 July and are participating for their new Affiliate for the first time in the Vawdon Cup, Country Championship or State Cup will be considered **NEW** points.

	<p>Once transferred, a player who moves from Juniors into Vawdon Cup, Country Championships and/or State Cup representation may remain with that Affiliate with their points value added to TOTAL Points. Consistent with the points system, those points will remain in an Affiliates TOTAL Points for three years. As such, that Affiliate would not be eligible for any further imports/drafts until their points total is under the applicable points cap. The transferred player must however meet player eligibility for future events should they wish to remain with that Affiliate. This operates in the same way as the player pool in Clause 3.1.10.</p> <p>Refer to Clause 3.3.10 for these points values. Players may return to their Home Affiliate at zero (0) points value.</p> <p>Should however a Junior Player transfer between Affiliates to firstly participate in Vawdon Cup, Country Championships and State Cup, they will incur NEW player points.</p> <p>Refer to Clause 3.3.10 for these points values. Players may return to their Home Affiliate at zero (0) points value.</p>
3.1.19	<p>Player Age Exemptions</p> <p>There are to no special consideration requests considered for players under/over the age required for the division they are wishing to participate in.</p> <p>Eligible ages for all divisions within each tournament will be outlined in each event’s relevant Conditions of Entry.</p>
3.2	<p>Player Points System Determinations</p>
3.2.1	<p>If players who are not “home grown” or “long term” force the maximum points limit to be exceeded, then the nomination of that team will not be accepted until the adjustment is made by that Affiliate.</p> <p>The Player’s Point System and interpretation of such will be determined and monitored by the NSWTA in conjunction with the High Performance Unit (HPU), who in the case of a dispute retains the right to assess any player to any points value which is in the best interest of the NSWTA events.</p> <p>All transfers and players history will be documented for use in determining the value of the players from one year to the next.</p>
3.3	<p>Player Points System Definitions</p>
3.3.1	<p>Affiliate Competition –Refer Clause 3.1.3</p> <p>Country – Affiliates based outside the Greater Sydney Metropolitan area.</p> <p>Eligible Participant –Refer Clause 3.1.2</p> <p>Family - For clarity and the purpose of implementation of a source of exemption the NSWTA define ‘family’ in this clause as parents or legal guardian or siblings.</p> <p>Family Exemption Requests - in the case of an established family (being Parent, Legal guardian and or sibling) history/lineage to an Affiliate in line with the “long-term status” clause outlined in Clause 3.3.1.</p> <p>Home Affiliate Status – is determined by:</p> <ol style="list-style-type: none"> Who they first played representative touch for or; First senior representative touch if they did not participate in junior representative touch. <p>NB. Where a player’s junior Affiliate does not have senior pathways, the NSWTA will link that junior Affiliate to an existing local senior participating Affiliate. Therefore, the player is permitted to represent the linked Affiliates at zero (0) points. This is only applicable where a player played junior representative touch for an Affiliate that does not have senior pathways.</p>

Import Player – is one who has come from another Affiliate, state or country and having played representative touch within the last three (3) years.

Incumbent – is defined as:

- a) Being a current participating member of a representative team until such time as that player is replaced in that team (not just a squad member) or;
- b) For Junior representative players, once that player is over age of their incumbent team, they will refer to their next highest level based on NSWTA event criteria (i.e. year of birth).

NB. Any player who falls into the three (3) year window but has not participated within the last calendar year will be valued at one level below that of their last representative level in the calendar year in which it occurs. E.g. If valuing a player for 2021/22, and that player did not play representative touch in 2020/21, we would look to 2019/20.

Interstate Player - Is not eligible for home grown or long-term player status unless they have declared that selection to NSWTA State of Origin as their first choice. Therefore, a player who chooses not to represent NSWTA will be treated as a new import player year on year.

Like Competitions - Competitions that are recognised by the NSWTA as competitions equal/equivalent to/of representative competitions in NSW.

Long term Affiliate status – a player who after 3 years without representing another Affiliate will have their points return to zero (From the first tournament entered on a calendar year basis from January 1 to December 31). I.e. if John Smith transferred to Affiliate XYZ at any event in 2018, he would be valued at zero points as of 1 January 2021. **NB.** Upon attaining long term status, this **does not** become or replace a player's Home Affiliate.

New player – any player who has not played any level of representative Touch (not including School pathways) or any player that did not play with that Affiliate at the last NSWTA event which that Affiliate entered.

Points value – A player's points value does not escalate as their representative honours do whilst at the same Affiliate. That is, they remain at the same value that they came to the Affiliate with. This only remains in force only if the player does not represent in another affiliate/team in a NSWTA event or recognised Like Competition.

- **NEW points** are the maximum allowable points for that representative year based on state rankings as per **Clause 3.3.4** long as they remain under the allowable **TOTAL** points cap.
- **TOTAL points** are the maximum allowable points for based on state rankings as per **Clause 3.3.4**. A combination of any current points and **NEW** points must not exceed the allowable **TOTAL** points cap.

Player Clearance (Player Transfer Process) – Players wishing to transfer Affiliates between events will require clearance online via the NSW PLAYER CLEARANCE GOOGLE DOCUMENT submitted by their current Affiliate, approved from NSWTA and accepted by their new Affiliate.

Representative Player – Any player who has played any level of representative Touch (not including School pathways) within the last three (3) years.

Residential exemption – Is only for:

- A country player who moves from one country town to another country town as long as this is outside their current Affiliate Cluster at a minimum 60 minutes in car travel time from previous residence to new residence as measured by GPS routing conducted by NSWTA.
- A country player that moves from the Country to the City or vice versa for educational purposes will receive an exemption where they may participate for the Affiliate in closest proximity to their residential address or their educational provider.
- Interstate player

	<p>Senior Player - A representative player who participates in the Over 30's division or older.</p> <p>Top Four Affiliate – An Affiliate in Men's, Women's and Mixed Open Divisions ranked in the state's Top Four based on the previous year's results under the NSWTA Ranking policy.</p> <p>Transfer List – Is the list of players who wish to change affiliates and whose points value is determined as at June 30 each year. This value will be determined by the highest level achieved in the previous July 1 to June 30 event cycle and will remain the same value for the full event cycle regardless of any higher representative honours.</p> <p>Youth Player – A representative player who participates at the 20's division or younger or participates in the NTL T- League but is under the age of 20.</p>
--	--

3.3.2	<p>The 2021/22 State Rankings for each of the Open Division's Top Four are:</p> <table style="width: 100%; border-collapse: collapse;"> <thead> <tr> <th style="text-align: left; width: 33%;">Men's Open</th> <th style="text-align: left; width: 33%;">Women's Open</th> <th style="text-align: left; width: 33%;">Mixed Open</th> </tr> </thead> <tbody> <tr> <td>1 Hornsby Lions</td> <td>1 Manly Sea Eagles</td> <td>1 Hills Hornets</td> </tr> <tr> <td>2 Doyalson Dragons</td> <td>2 Wests Magpies</td> <td>2 Wallsend Wolves</td> </tr> <tr> <td>3 Penrith Panthers</td> <td>3 Easts Roosters</td> <td>3 Northern Suburbs</td> </tr> <tr> <td>4 Bankstown Sports</td> <td>4 Canterbury Bulldogs</td> <td>4 Mudgee Mudcrubs</td> </tr> </tbody> </table> <p>NB. Affiliates are able to 'spend' <u>the allocated NEW points</u> as per Clause 3.3.4 long as they remain under the allowable TOTAL points cap.</p> <p>NB. In previous years due to strength of competition, Vawdon Cup has had a higher weighting than Country Championships. However, due to the impact COVID-19a number of teams who traditional play in both events were not able to do so in 2020. Therefore, the decision was made that both Vawdon Cup and Country Championships are to rated equal. It was also decided that due to no mixed division at Vawdon Cup only one result would be utilised when determining the Mixed Open club rankings.</p> <p>State rankings process is a detailed account on the performance of each club in their best two of three major events that NSWTA conduct. These include the Vawdon Cup, Country Championships and State Cup.</p>	Men's Open	Women's Open	Mixed Open	1 Hornsby Lions	1 Manly Sea Eagles	1 Hills Hornets	2 Doyalson Dragons	2 Wests Magpies	2 Wallsend Wolves	3 Penrith Panthers	3 Easts Roosters	3 Northern Suburbs	4 Bankstown Sports	4 Canterbury Bulldogs	4 Mudgee Mudcrubs
Men's Open	Women's Open	Mixed Open														
1 Hornsby Lions	1 Manly Sea Eagles	1 Hills Hornets														
2 Doyalson Dragons	2 Wests Magpies	2 Wallsend Wolves														
3 Penrith Panthers	3 Easts Roosters	3 Northern Suburbs														
4 Bankstown Sports	4 Canterbury Bulldogs	4 Mudgee Mudcrubs														
3.3.3	<p>Player Points System relates to the following divisions:</p> <ul style="list-style-type: none"> • Men's (Premier League, Division 1, Division 2, Division 3, Open A, Open B, 20's, Boy's Youth, etc.) • Women's (Premier League, Division 1, Division 2, Division 3, Open A, Open B, 20's, Girl's Youth, etc.) • Mixed (Division 1, Division 2, Open A, Open B, other Mixed divisions, etc.) 															
3.3.4	<p>For clarity, the following table is provided so Affiliate Coordinators are aware of the 2021 allowable Player Points System limits.</p> <p>Affiliates ranked outside the top 10 are allowed the same points cap as teams 9th-10th. If an Affiliate has moved into the top four (4) and the player list remains intact from 2020 they will be able to maintain all players that participated during that year.</p> <p>Any clarification required by the Affiliate Coordinator must be sent in writing to the NSWTA.</p>															

Rank	Men's Category (Open's & Youth)	New Points for 2021	Total Points Cap with 1 Team	TotalPoints l Cap 2 Teams	Total Points Cap 3+ Teams
1	Hornsby	40	100	120	140
2	Doyalson	40	100	120	140
3	Penrith	50	110	130	140
4	Bankstown	50	110	130	140
5	Central Coast	80	150	170	180
6	Parramatta	80	150	170	180
7	Beresfield	100	160	180	190
8	Wollongong	100	160	180	190
9	Wests	180	180	180	200
10	Newcastle City	180	180	180	200

Rank	Women's Category (Open's & Youth)	New Points for 2021	Total Points Cap with 1 Team	TotalPoints l Cap 2 Teams	Total Points Cap 3+ Teams
1	Manly	40	100	120	140
2	Wests	40	100	120	140
3	Easts	50	110	130	140
4	Canterbury	50	110	130	140
5	Northern Beaches	80	150	170	180
6	Hills Hornets	80	150	170	180
7	Central Coast	100	160	180	190
8	Newcastle City	100	160	180	190
9	Parramatta	180	180	180	200
10	Hornsby	180	180	180	200

Rank	Mixed Category (Open's)	New Points for 2021	Total Points Cap with 1 Team	TotalPoints l Cap 2 Teams	Total Points Cap 3+ Teams
1	Hills	40	100	120	140
2	Wallsend	40	100	120	140
3	Northern Suburbs	50	110	130	140
4	Mudgee	50	110	130	140
5	Doyalson	80	150	170	180
6	Hornsby	80	150	170	180
7	Maitland	100	160	180	190
8	South West Sydney Raptors	100	160	180	190
9	Manly	180	180	180	200
10	Penrith	180	180	180	200

	<p>Affiliates ranked outside the top six in the state and have three or more teams in a division are eligible to spend the allocated points however cannot play more than 180 points in Premier League and/or Open A.</p> <p>NB: A player once having transferred to an Affiliate will be able to remain with that Affiliate, regardless if the number of teams at that Affiliate drop and is therefore are over the allowed TOTAL point's threshold. Should this be the case and the Affiliate is over their points limit, they will not be entitled to further imports until such times as they are below the required limit for their Affiliate.</p> <p>Exemption requests will be considered in the case of an established family (being Parent, Legal guardian and or sibling) history/lineage to an Affiliate in line with the "long-term status" clause outlined in Clause 3.3.1. For clarity and the purpose of implementation of a source of exemption the NSWTA define 'family' in this clause as parents or legal guardian or siblings.</p> <p>The Points System will not be applied to Senior Divisions however please refer to clause 3.1.18. Refer to clause 3.3.10 for full import players worth.</p>
3.3.5	The 'import' player must still abide by the eligibility clause of being registered and participating at the Affiliate that they wish to represent.
3.3.6	<p>All players classified under the Player Points System remains adjudged by the NSWTA and their decision will be final.</p> <p>Refer to Clause 3.3.10 for full import players points values.</p> <p>N.B. An interstate player is not eligible for home grown or long-term player status <u>unless</u> they have declared that selection to NSWTA State representation as their first choice. Therefore, a player who chooses not to represent NSWTA will be treated as a new import player each year.</p>
3.3.7	A player can return to their 'home Affiliate' or 'long term' Affiliate at any time without penalty against the import player points system. That is at zero points. This does not apply to an interstate player whose allegiance is not to NSWTA as a State representative.
3.3.8	<p>Long Term Status As per 3.3.1 after three (3) years uninterrupted at an Affiliate they become a long-term player and have their points return to zero. This does not apply to an interstate player whose allegiance is not to NSWTA as a State representative.</p>
3.3.9	<p>Return Home Rule A home-grown Country player may return to participate for his/her home Affiliate at zero points, if they are registered and participating in ANY NSWTA Affiliate competition.</p> <p>Country based players who relocate from one country town to another may be given a residential exemption. This does not apply to an interstate player whose allegiance is not to NSWTA as a State representative.</p>
3.3.10	<p>Player Points Value</p> <p>1. Players over the age of 35 (Born 1985 or prior) are worth zero points, except when they are incumbent Opens category NRL Touch Premiership, , State of Origin or National Players.</p> <p>This applies to any player moving from one NSWTA affiliate to another. International or interstate players do not qualify under this clause and are still worth relevant points.</p> <p>2. Players points value will be determined at their highest representative level at the end of the previous year's representative cycle being July 1 to June 30 .</p> <p>3. The Youth Divisions are an inclusion within the points cap of clubs Men's, Women's or Mixed Divisions under the terms of Clause 3.1.18.</p>

The below table demonstrates the points value of players based on their highest representation over 2020/21, 2019/20, 20/1819 seasons. To use this table to determine a points-value the player must select the **most recent highest level of representation**. Note also a player's points value remains that at the point of acquisition. It does not slide each year of representation until zero.

N.B 2020-21 includes: Youth Regional Players (Junior Regionals), Opens Regional Players (National Touch League), Opens State Players (State of Origin), any Youth International Players (Youth World Cup, Trans-Tasman etc), any Opens International Players (World Cup, Trans-Tasman etc)

SELECT THE HIGHEST MOST RECENT LEVEL OF REPRESENTATION			
Representative Player / Event	2020/21	2019/20	2018/19
Home Grown Player	0 Pts	0 Pts	0 Pts
Long Term Affiliate Player	0 Pts	0 Pts	0 Pts
SELECT THE HIGHEST MOST RECENT LEVEL OF REPRESENTATION			
Opens Players	2020/21	2019/20	2018/19
Open International Player	70pts	50Pts	40Pts
Open State Player	50pts	40Pts	30Pts
Open NRL Premiership/Elite 8 Player	40pts	30Pts	20Pts
Open Regional Player	30pts	20Pts	10Pts
Open Affiliate Player	20pts	10Pts	5Pts
SELECT THE HIGHEST MOST RECENT LEVEL OF REPRESENTATION			
Over 30 Players	2020/21	2019/20	2018/19
Over 30 International Player	40pts	30Pts	20Pts
Over 30 State Player	30pts	20Pts	10Pts
Over 30 Regional Player	20pts	10Pts	5Pts
Over 30 Affiliate Player	20pts	10Pts	5Pts
SELECT THE HIGHEST MOST RECENT LEVEL OF REPRESENTATION			
18's/20's Players	2020/21	2019/20	2018/19
18's/20's International Player	40pts	30Pts	20Pts
20's State Player	30pts	20Pts	10Pts
20's Regional-T League/NYC Player	30pts	20Pts	10Pts
20's Affiliate Player	20pts	10Pts	5Pts
SELECT THE HIGHEST MOST RECENT LEVEL OF REPRESENTATION			
Junior Players	2020/21	2019/20	2018/19

Junior Regional Players	20Pts	10Pts	0Pts
Junior Affiliate Player	10pts	10Pts	0Pts

SELECT THE HIGHEST MOST RECENT LEVEL OF REPRESENTATION

Developing States/Countries	2020/21	2019/20	2018/19
Open Development International (Non Aus/NZ)	30Pts	30Pts	20Pts
Over 30 Development International (Non Aus/NZ)	20pt	20pt	10Pts
18's/20's Development International (Non Aus/NZ)	20pts	20pts	10Pts
Open's Development State Player (Non NSW/QLD)	30pts	30pts	20Pts
Open's Development Regional Player (Non NSW/QLD)	20pts	10pts	5Pts

3.3.11	<p>International Development Players NSWTA recognises with the current development of Touch Football internationally that the level of player development from those deemed to be developing nations is not equivalent to that in Australia and New Zealand. Nor are they equivalent to an Australian based dual eligibility representative player whose has been developed under the Australian or New Zealand systems.</p> <p>Therefore, any international representative player from a country deemed to be a Developing Nation by the NSWTA under these conditions may be given exemption from points value where the following conditions are met:</p> <p>International Development Player Request Process:</p> <ul style="list-style-type: none"> • The request/representation to participate is made by the international country's federation/association directly with the NSWTA; • The player pathway has only been via their home nation up until this request (i.e. was not playing in Australia/New Zealand first then went O/S); • A holder of their home nation's passport; • Recognition and acceptance that the NSWTA will place the player in a team with a view to the players residential location, the players development and the competition overall. This may not be at the Association the player has as a first-choice destination.
3.3.12	<p>Player Grievance Process Where a grievance claim seeking an exemption is lodged, the NSWTA will investigate that grievance claim and/or determine its legitimacy. If proven, the following will apply;</p> <ol style="list-style-type: none"> 1. Should a player be able to demonstrate three (3) consecutive years of playing history domestically at an affiliate they will be allowed to move to that affiliate; 2. Where this is not demonstrated the player will be able to move to the next closet affiliate, by road and as determined by the NSWTA, to their place of residence; 3. Should this affiliate not have an equivalent team consummate to the players ability or standing, the NSWTA will determine the next closest affiliate to facilitate this; 4. Should the player not wish to move to this affiliate the player will be placed in the player pool/draft and be valued at zero points for the purpose of the player pool/draft rules. <p>NB. Once a player has received an exemption due to a legitimate grievance and has moved to a new affiliate, to provide a level of surety for the new club in accepting that player, they must remain with the new affiliate for a minimum of two years.</p>

3.4	Proof of Age
3.4.1	<p>The Team Manager for all age categories must have readily available proof of age for all players in their team. The following will only be accepted as proof of age: BIRTH CERTIFICATE, NSW DRIVER LICENCE, PASSPORT or PROOF OF AGE CARD</p> <p>Teams using players within their teams without the required proof of age are liable to be disqualified if a protest is lodged and the player concerned cannot verify their age. Also, any player, who cannot provide this identification, will be disqualified from further competition.</p>
3.5	Coaches & Managers Eligibility
3.5.1	<p>All Coaches and Managers must be a current member and be registered with the NSWTA Affiliate they represent, in the Current Competition or Previous Competition. The Coach must be at the Accreditation as set out in the specific event's Conditions of Entry.</p> <p>All levels of Accreditation will be only verified via the TFA Accreditation Portal- THE NEST.</p> <p>N.B. All coaches and referees had to register themselves on the NEST by June 30, 2021.</p> <p>The RPL/RCC closed on June 30 - any accredited members who have not completed the RPL/RCC by June 30 will no longer have their accreditations recognised.</p> <p>In extenuating circumstances, the Coach or Manager may seek dispensation by placing their request in writing to the NSWTA prior to the Tournament by the closing date set down in the specific event's Conditions of Entry.</p>
3.6	Referees Eligibility
3.6.1	<p>Affiliates are required to nominate referees as per the conditions of entry of that event. Minimum age for a referee at a senior event is sixteen (16) years old. Minimum age for a junior event is fourteen (14) years old.</p> <p>Any request for dispensation outside this clause needs to in writing and endorsed by the Regional Director of Referee and State Referees Panel prior to consideration by the NSWTA.</p>
3.6.2	<i>PLEASE BE ADVISED THAT UNDER NO CIRCUMSTANCES WILL NOMINATIONS BE ACCEPTED WHICH DO NOT INCLUDE THE CORRECT REQUIREMENT OF REFEREE NOMINATIONS.</i>
3.6.3	Nominated Referees are to be accredited to the level of accreditation identified in the relevant event Conditions of Entry. It is an expectation that all referees are up to the standard that is required to Referee games at a NSWTA representative event.
3.6.4	Nominated Referees must be registered and participating with your Affiliate for Eligibility and Insurance purposes and must be regularly officiating at your Affiliate in the Current Competition or Previous Competition.
3.6.5	Players and team management are unable to qualify as referees under this clause.
3.6.6	<p>The onus is on the Affiliate to ensure that the referee is aware that they have been nominated by the Affiliate. NSWTA will verify this during the referee registration process.</p> <p>During the verification process, if a referee is unaware that they have been nominated by the Affiliate the Affiliate will be advised and may have a team and or the Affiliate withdrawn from the competition.</p>
3.6.7	If accommodation is provided for the referee, the Affiliate may be liable for financial cost of the accommodation following the late withdrawal of the referee subject to circumstance.

	Please see the relevant event's Conditions of Entry for further details.
3.6.8	Any Affiliate that wishes to obtain information about referee courses, are to contact your Regional Referee Director, NSWTA Education and Events Officer technical@nswtouch.com.au or check www.nswtouch.com.au for the latest dates & venues for technical courses.
3.6.9	<p>If accommodation is provided for referees NSWTA will not accommodate referees under the age of 18 years old (unless it is with their parent who must also be a referee at the event). To be accommodated by NSWTA, referees must turn 18 years of age by the date prior to start of the event.</p> <p>These dates are as listed below:</p> <ul style="list-style-type: none"> • 2021 Country Championships – by Friday 15 October 2021 • 2021 State Cup – by Thursday 2 December 2021 • 2022 Junior State Cup (Northern Conference) – by Friday 11 February 2022 • 2022 Junior State Cup (Southern Conference) – by Friday 11 February 2022 • 2022 Junior State Cup (State Final) – by Friday 11 February 2022 • 2022 Junior Regionals – by Friday 29 April 2022

SECTION 4: UNIFORMS

4.1	Quality
4.1.1	<p>All Affiliates playing uniforms are to be correctly numbered, be of the same design and artwork and must be correctly worn for all games of competition. Approved Touch Football shoes must be worn in accordance with Rule 3.2 of the TFA rulebook. N.B. Uniform designs that clash with the Referee Uniform will NOT be allowed (to avoid confusion with the Referee).</p> <p>All uniform and uniform submissions must comply with any NSWTA Licencing Regulations that are in place for the event that Affiliates have entered. The NSWTA reserves the right to reject any design. If a design is rejected the Affiliate will need to submit a new design.</p> <p>For more details regarding the NSWTA Licensing Program, please visit: NSWTA Uniform Guidelines</p> <p>Official uniform items are determined as (but not limited to):</p> <ul style="list-style-type: none"> • Playing Shirt or Singlet; • Playing Shorts or Tights; • Club Socks; • Club Hat; • Team Management Club Polo Shirt and Club T-shirt; • Team Management Club Shorts or Pants; • Club Jacket, Jumper or other off field items <p>All playing uniforms must include:</p> <ul style="list-style-type: none"> • Identification numbers: All players are to wear an identifying number on the back of their shirt/singlet, not less than 16cm in height and clearly displayed. • No temporary measures such as tape will be permitted to replace or amend numbers. • A one or two digit number which meets the requirements set out above. • No three digit numbers will be permitted. • Zero (0) can only be used in the following sequence 0 (not 01, 02 etc.) 10, 20, 30, 40, 50, 60, 70, 80 and 90. • The only playing numbers permissible are between 0-99 inclusive. <p>Male Playing Uniform Design The male Affiliate uniform includes:</p> <ul style="list-style-type: none"> • Playing shirt or singlet; • Playing shorts; • Club Socks; • Club Hat (hat is an optional wear item).

	<p>Males in a Men’s or Mixed team may only wear one type of uniform and cannot be mismatched in type. Special dispensation can be sought through the Competitions Coordinator.</p> <p>Female Playing Uniform Design The female Affiliate uniform includes:</p> <ul style="list-style-type: none"> • Bodysuits (one or two price) or; • Playing shirt or singlet; • Shorts or tights (bike pants); • Club Socks; • Club Hat (hat is an optional wear item). <p>Females in a Women’s or Mixed team may only wear one type of uniform and cannot be mismatched in type. Special dispensation can be sought through the Competitions Coordinator.</p> <p>Team Management & Officials Uniform Design Team Management & Officials Affiliate uniform includes:</p> <ul style="list-style-type: none"> • Polo Shirt (as a minimum) or club T-shirt; No tank tops or singlets permitted whilst in the sub box • Jacket/Hoodie or similar; • Shorts/Track pants; • Club Socks • Club Hat (hat is an optional wear item); can be a wide brim hat with Affiliate logo/branding; • Enclosed footwear. <p>Team Management & Officials may only wear one type of uniform and cannot be mismatched in type. Special dispensation can be sought through the Competitions Coordinator.</p> <p>Affiliate Hat The Affiliate Hat is only the currently submitted and approved version(s).</p> <p>Compression Garments The wearing of compression garments is permitted however these must be worn under the approved Affiliate uniform. In all cases compression garments are not to be worn in place of the Affiliate uniform.</p> <p>Sun Safe Policy All Affiliates and Regions are encouraged to make themselves aware of Sun Safe Policies and thus ensure that their uniforms meet Sun Safe Policy guidelines.</p> <p>COVID-19 Due to impact of COVID-19, the wearing of sports gloves during play is permitted.</p>
<p>4.1.2</p>	<p>If any Player, Coach, Manager, Official from an Affiliate is observed by a Tournament Official and deemed to be non-compliant for uniform requirements whilst participating, they will be requested to leave the field of play to meet compliance before return to participation. Additionally, non-compliance with the uniform requirements will be reported to the Affiliate Coordinator and penalties may apply for further non-compliance.</p> <p>COVID-19 Due to the effects of COVID-19 on Approved Licenced Suppliers, Affiliates may seek clarification from the Events Team on the timelines for meeting the representative uniform requirements. Relevant changes to this Clause due to COVID-19 Impacts on Approved Licenced Suppliers will be outlined in the specific Event Conditions of Entry.</p>
<p>4.1.3</p>	<p>Uniform Submission Form</p> <p>Affiliate uniform must be manufactured in a material that is acceptable and approved by NSWTA. Affiliates must register uniform designs to be approved by NSWTA prior to being worn at a NSWTA Tournament via the Uniform Submission form to the NSWTA Competitions Coordinator. Please check with the relevant event’s Conditions of Entry for submission timelines.</p>

<p>4.1.4</p>	<p>Usage of NSWTA events logos & NSWTA Partners logos is encouraged. However, authorisation of any usage must be first obtained from NSWTA.</p> <p>Penalty: \$500 (GST exclusive) maximum per Affiliate.</p>
<p>4.1.5</p>	<p>Usage of the NSWTA logo must comply with any NSWTA Licencing regulations that are in place for the event that affiliates have entered into.</p> <p>Penalty: \$500 (GST exclusive) maximum per Entity.</p>
<p>4.1.6</p>	<p>Usage of the NRL Touch Football logo is not permitted unless written authorisation is granted by the NSWTA following consultation with TFA.</p> <p>Penalty: \$500 (GST exclusive) maximum per Entity.</p> <p>For more details regarding the TFA Licencing Program, please visit: TFA Apparel Licencing</p>
<p>4.1.7</p>	<p>All logos and sponsors names on the uniforms or dress gear must be of a size, placement and standard as approved by NSWTA.</p>

SECTION 5: WORKING WITH CHILDREN

5.1	Working with Children Check (WWCC)
5.1.1	<p>The Working With Children Check (WWCC) is a legal requirement that applies to persons who work or volunteer with children (U18 years old). It checks the background of persons who work or volunteer with children in sport clubs, schools, childcare centres, community groups, Churches and other organisations.</p> <p>Once you verify a WWCC you must keep appropriate records that proves your members are cleared to work with children. You must also provide this record to the NSWTA.</p> <p>Each Affiliate must be registered as an employer, have all Coach/Managers/Officials undergo the prescribed check and verify all and report to the NSWTA prior to the event.</p> <p>Please refer to the accompanying Working with Children Check documentation to understand the process required: -</p> <ul style="list-style-type: none">• WWCC NSWTA Letter to Affiliates• WWCC Step Guide For Affiliates• WWCC Database Template• WWCC “How To” guide <p>All Affiliates must submit a copy of the WWCC Verification Results Receipt that you receive via email after verifying your Affiliates checks online - NSWTA will not be accepting any submissions that fail to submit a copy of this receipt.</p> <p>Please refer to the above “How To” guide for further details</p> <p>All Affiliates are to adopt the NSWTA Youth Coach Guidelines.</p>
5.2	Guardianship
5.2.1	<p>In some instances, persons under the age of 18 years old will be in attendance at NSWTA events. In understanding our expectations around your role and responsibilities we provide Affiliates some additional information related to legal guardianship. This communication contains general advice only and does not take into account individual objectives, circumstances and or a legal view. Individual research and advice should be sort for your personal circumstance.</p> <p>Guardians - A guardianship is a legal right given to a person to be responsible for the food, health care, housing, and other necessities of a person deemed fully or partially incapable of providing these necessities for himself or herself.</p> <p>What Are a Guardian's Duties? The guardian makes decisions about how the person lives, including their residence, health care, food, and social activity. The guardian is intended to monitor the person, to make sure that the person lives in the most appropriate, least restrictive environment possible, with appropriate food, clothing, social opportunities, and medical care.</p> <p>Communication with the Parents Ensure you are informed of any medical concerns, including food allergies. In addition, you'll need to agree on things like sleeping arrangements, the administration of over-the-counter medications, and procedures for contacting the parents in an emergency.</p> <p>Information provided and acknowledged from the following websites: http://www.expertlaw.com/library/estate_planning/guardianship.html https://www.verywellfamily.com/temporary-guardianship-forms-2997661</p>
5.3	Supervision of Under Age Participants

5.3.1	<p>Affiliates are responsible for the direct supervision of any player, official or referee who is under the age of 18 years old (“Minor”). Affiliates must take all reasonable steps to protect Minors under their supervision from all forms of harassment. This includes but is not limited to ensuring that:</p> <ul style="list-style-type: none"> (a) Each Minor and their legal guardian is provided with a copy of the Member Protection Policy; (b) All Officials comply with all applicable Child Protection laws; and <p>When travelling to, during and from the Tournament, all reasonable steps are taken to supervise Minors. The Affiliate must appoint a guardian for each Minor whose parents and/or legal guardian are not in attendance. The appointment of such guardian must be approved in writing by the parents and/or legal guardians of the Minor prior to the Tournament.</p>
--------------	--

SECTION 6: IMAGES

6.1.1	<p>All persons accept that, by participating in this event, they may be photographed/filmed and that these images may be used by the NSWTA for promotion of the sport. The NSWTA will not pass any image/s onto a third party unless prior approval is sought. If you do not wish the NSWTA to be able to use your image/s or be filmed you must notify NSWTA in writing.</p>
6.1.2	<p>NSWTA reserves the right to take immediate possession of any video footage taken at an NSWTA event that may assist the NSWTA in investigating any matter of judiciary, discipline or protest. All care of equipment, tape and data cards will be taken and returned to the owner upon determination of the judiciary, disciplinary hearing, or protest.</p>
6.1.3	<p>With the rise in use of social media, NSWTA has regulations around the filming and or photography of players and games at events. To protect the privacy and images, anyone filming and photographing games or players will be required to be registered with and be APPROVED by NSWTA to have permission to photograph or film. In allowing photography/videography applicants must comply with relevant clauses and conditions set out by the NSWTA around the use of the footage/photos.</p> <p>Affiliates must make an application to the NSWTA prior to the event for any official photographer/videographer and acknowledge along with the approved applicant that images/film MUST NOT be passed on to a third party unless prior approval is sought and granted.</p> <p>Approved applicants must report to Tournament Control prior to the commencement of the event to be issued with a NSWTA Official photographer vest that must be worn at all times while engaged at the event. Non-compliance will result in credentials and permissions immediately removed.</p> <p>All approved photographers and videographers must provide all images to NSWTA and cannot use images or film for commercial gain or purpose without the express permission of the NSWTA.</p>

SECTION 7: DIVISIONS AND CATEGORIES

7.1.1	<p>Information on Divisions and age requirements for each event can be found in the Conditions of Entry for that event.</p>
7.1.2	<p>There must be at least five (5) teams to make a category.</p> <p>NB. Any variance on this will be at the determination of the NSWTA and only in extenuating circumstance.</p>
7.1.3	<p>If there are less than five (5) teams nominated, then those teams will join with the next closest category as determined by the NSWTA.</p>
7.1.4	<p>An Affiliate may normally only enter one (1) team in a category. However additional teams will be accepted at the convenience of the competition. If additional teams are accepted confirmation will only be given after the closing date.</p> <p>If two (2) teams are entered the stronger of the teams will be known as Team No 1 and the other will be known as Team No. 2. This will be determined by the NSWTA.</p>

	<p>Any affiliate that has two (or more) teams in a division will need to ensure that the additional team(s) wear a different uniform when playing against their primary team. It is the responsibility of the affiliate to ensure a different playing strip is available and worn.</p> <p>Only one (1) Team will be eligible to earn points in the Affiliate Championship points. This will be whichever of the two entries finishes higher.</p>
--	--

SECTION 8: LATE ENTRY AND REFUNDS

8.1.1	Team Nominations received after relevant closing date, will only be accepted at the convenience of the competition. (i.e. to replace a bye or another team withdrawal).
8.1.2	If an Affiliate enters a team(s) and subsequently withdraws that team(s) within 21 days prior to the commencement of the competition, they are liable for the full amount of player registration fees.
8.1.3	Any individuals completing the online Late Registration process will be required to pay the associated late registration fee. This additional fee will be outlined in the relevant event's Conditions of Entry.

SECTION 9: TEAM REGISTRATION

9.1.1	NSWTA uses the online registration process via MySideline for all of its events. This online registration process is provided through MySideline and accessible up until the closing registration date. After this time <u>no further registrations will be taken</u> .
9.1.2	Once an affiliate has entered a NSWTA tournament, the nominated Affiliate Coordinator will be provided with information to assist all individuals in the utilisation of this online process. Any questions can be directed to the NSWTA Events Team.
9.1.3	Once the online registration process is completed, a registration sheet or will be developed then e-mailed to the Affiliate Coordinator. It is the responsibility of the Affiliate Coordinator to distribute the registration sheet to their teams.
9.1.4	All Team registration sheets must be provided with the correct jersey numbers and are to be signed by all team members and returned to NSWTA via the information outlined in the timeline of that specific event. No player is to take the field until they have signed the registration sheet. Teams found breaching this condition of entry will automatically forfeit all games until this process is completed.

SECTION 10: AFFILIATE ENQUIRIES

10.1.1	Upon the acceptance of their entry, enquiries for any Affiliate or their teams must be made by the nominated Affiliate Coordinator. All correspondence from the NSWTA will be sent to the Affiliate Coordinator using the correct email address provided.
10.1.2	It is the responsibility of the Affiliate Coordinator to ensure ALL their Coaches, Managers and Officials have read and are conversant with the General Conditions of Entry and each relevant event's Conditions of Entry prior to and during the event.
10.1.3	Affiliate Coordinator or a nominated representative must be present for the duration of the relevant event as the main point of contact for NSWTA. The nominated representative must be aware of and accept all responsibilities in relation to the assumed role.

SECTION 11: EVENT OPERATIONS

11.1	Teams
11.1.1	For a NSWTA Affiliate to be eligible to enter teams in the Tournament they must be financial and compliant with NSWTA and register all competitions they conduct.
11.1.2	The teams must represent an Affiliate within a NSWTA region.
11.1.3	They must not exceed the points limit set for NSWTA events.
11.1.4	Any other teams wishing to participate in NSWTA events will need to make a written request for inclusion.
11.1.5	Teams may register the number of players as indicated of that event Conditions of Entry.
11.2	Number of Teams
11.2.1	An Affiliate Must comply with Section 7
11.3	Affiliate Coordinator/Team Management Responsibilities
11.3.1	NSWTA will provide an online briefing video via the NSW Touch Football website. This briefing will be available prior to each event and the link for this will be sent directly to all Affiliate Coordinators and Team Management. It is imperative that all Affiliate Coordinators and Team Management view the information as it is expected that all information within is understood.
11.3.2	No responsibility will be taken for any actions undertaken by Coaches, Managers or Officials who do not view and understand the online briefing. Any questions out of this video should be directed to the Competitions Coordinator.
11.3.3	If deemed necessary, NSWTA will request Affiliate Coordinator/team management meeting(s) to be held prior to or during the specific event. Reasonable notice will be provided to those involved.
11.5	Insurance
11.5.1	For players to be covered by the TFA Insurance Scheme they must be registered in a Financial Affiliate within their Current Competition.
11.6	Control of the Event
11.6.1	The Competitions Coordinator in conjunction with the General Manager, Business Operations Manager and the NSWTA Board will be in charge of all matters relating to the Tournament. Any matters not covered in the General Conditions or Tournament Conditions will be determined by the above Officials and their decision will be final.
11.7	Match Balls
11.7.1	All matches must use the official NSWTA Match Ball in all games throughout the tournament. All teams receive a ball from the NSWTA. It is the responsibility of both teams to bring the provided official NSWTA match ball for use within that match. Balls will not be replaced if lost. Only faulty balls are able to be returned and swapped. Extra balls can be purchased from the NSWTA. Match Ball Size Under 8's – Under 12's – Junior Size Ball Under 14's & Above – Senior Size Ball COVID-19 Due to impact of COVID-19 Affiliates are to ensure that their match ball and warm up balls and equipment are washed and disinfected before and after each game.
11.8	Competition Points
11.8.1	Will be determined for each event and covered in the Conditions of Entry for that event.

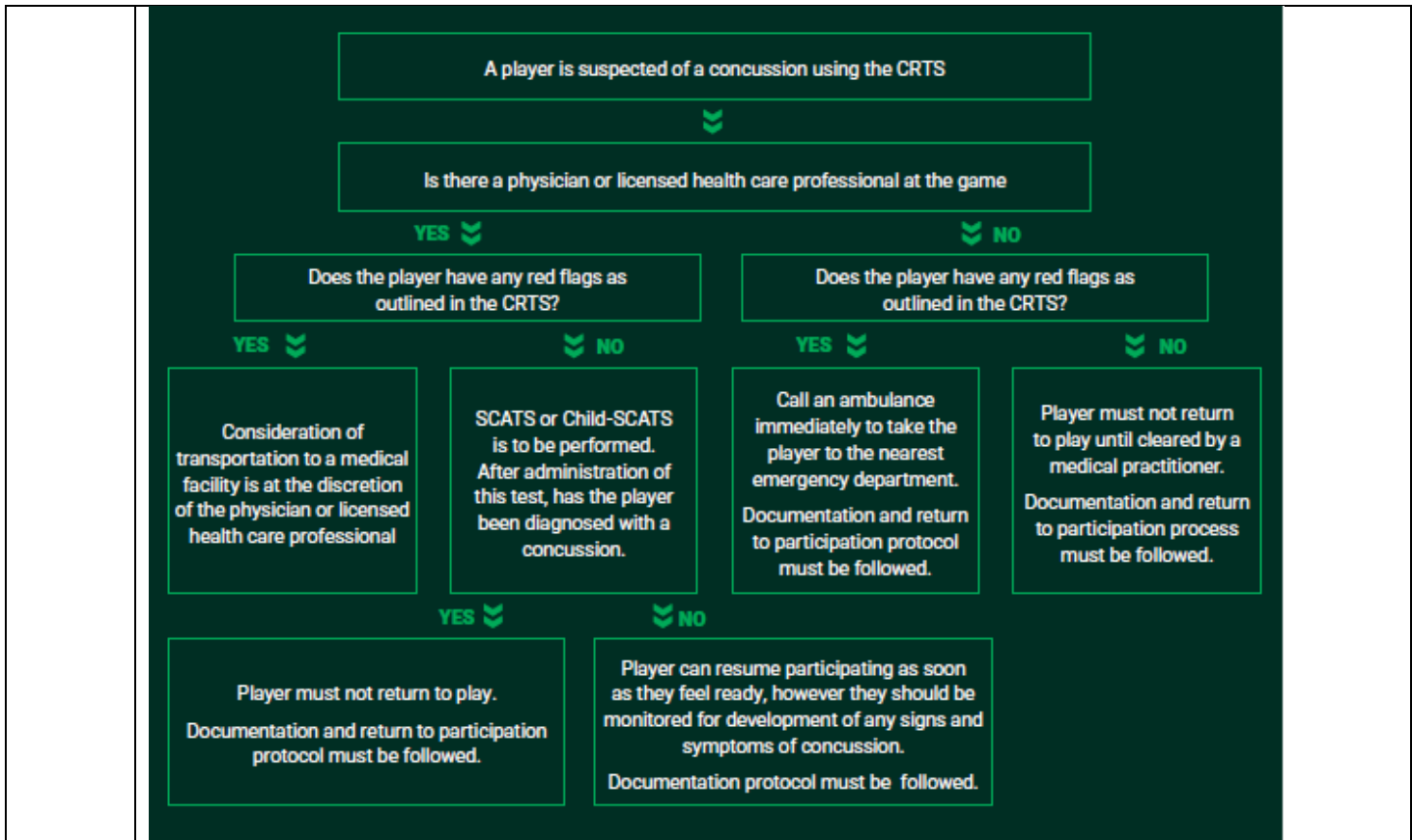
11.9	Affiliate Championship Points
11.9.1	Will be determined for each event and covered in the Conditions of Entry for that event.
11.10	Duration of Games
11.10.1	Will be determined for each event and covered in the Conditions of Entry for that event.
11.11	Field Layout
11.11.1	The Field layout will be finalised prior to each event. A field layout map will be available from www.nswtouch.com.au and NSWTA App.
11.12	Trophies
11.12.1	Will be determined for each event and covered in the Conditions of Entry for that event.
11.13	Presentation
11.13.1	Presentations will take place at an appointed time after the completion of Finals games. For the Venue, Dates and Times of the presentation ceremonies please refer to the Conditions of Entry for that event.
11.13.2	Teams must assemble at the presentation area 10 minutes prior to the commencement of the presentation.
11.14	Tents
11.14.1	An Affiliate who wishes to erect a tent at the fields must request this in writing to the Competitions Coordinator seeking approval. Correspondence must identify the size and structure of the tent. A tent request form must be submitted to the Competitions Coordinator. This will need to be submitted by the closing date set down in the Conditions of Entry for that event. COVID-19 Due to the impact of COVID-19 and adherence to Public Health Orders at the time of an event- the matter of Affiliates being able to have onsite tents will be advised in the relevant event Conditions of Entry and any COVID-19 addendums advised by the NSWTA.
11.14.2	Any Affiliate or Spectator tent/shade structure placed in an area that is deemed to be dangerous or impeding a thoroughfare without the consent of the NSWTA Tournament Staff will be asked to remove the tent. The removal will be done by those who are responsible for erecting the structure.
11.14.3	Gas and Naked Flame (Hot Coals) BBQs or similar heating device for Affiliates, Regions, Participants and Spectators are not allowed at any venue where NSWTA conducts Events.
11.14.4	Tents are to be kept in a tidy manner during the event. At the end of the day the tent area MUST be left in a tidy manner. Excessive cleaning requirements may incur a penalty for the Affiliate.
11.14.5	Where Affiliates use ice baths, it is reasonable to assume that children will be present. All ice baths must be conducted in the presence of and under supervision of a trained and certified medical professional. All ice baths must be completely emptied when not being supervised and at the end of each day of a tournament. It is vital that proper supervision occurs and that an adult (18 years old and older) always watches children of all ages around water. Adults should be actively supervising and within arm's reach because drowning can occur in less than a minute with no sound. Even when children can swim, 100% supervision is the key to preventing drowning (a leading cause of injury-related death/O). Children can drown in as little as 5cm of water. Remove any containers with water in them and make sure children cannot access any bodies of water on their own. COVID-19 Due to the impact of COVID-19 and adherence to Public Health Orders at the time of an event- the matter of Ice Baths will be advised in the relevant event Conditions of Entry and any COVID-19 addendums advised by the NSWTA.

11.14.6	<p>Many Affiliates and teams arrange lunches or snacks for participants during their touring levies and or pooling groceries and food. It is important to note that handling food for groups can be a major risk factor with food poisoning or spoiling.</p> <p>NSWTA reminds Affiliates they need processes and policies for the individuals responsible for these aspects. Please visit http://www.foodstandards.gov.au for more information.</p> <p>COVID 19 Due to the impact of COVID-19 and adherence to Public Health Orders at the time of an event- the matter of on location tents will be advised in the relevant event Conditions of Entry and any COVID-19 addendums advised by the NSWTA.</p>
11.15	Player Numbers
11.15.1	The number of players per team will be determined by that event's Conditions of Entry.
11.16	Draw Formula
11.16.1	If the pool system is used, the pools will be determined by combination of the NSWTA Rankings and placing position of the team's previous year's tournament. The final format will not be decided until all team nominations are received.
11.17	Delay of Match & Forfeits
11.17.1	Teams must be in attendance at their playing fields five (5) minutes before the commencement of their match.
11.17.2	It is the responsibility of each captain to report to the referee so that the toss of the coin can be affected without loss of time. If a team is not at the field at the advertised starting time of the game, the attending team can be awarded the winning of the toss.
11.17.3	One of the referees will be positioned on the field for the five (5) minutes. One other member of the referees will contact Tournament Control and advise them of the situation. A member of Tournament Control will be sent immediately to the field to control the situation. As the referees do not wear watches, they will nominate a person to keep time. Upon arrival of a Tournament Official they will take over the role of keeping the time.
11.17.4	The offending team will receive a maximum of five (5) minutes from the commencement of the game (siren/whistle) to position the team on the field and be ready to commence play.
11.17.5	<p>If the offending team is not in attendance after the five (5) minutes has expired, the game will be deemed a forfeit and the non-offending team will be awarded a 5 - 0 win and receive competition points to the value of a win being four (4) points. The offending team will receive a score of 0 - 5 and receive a penalty of minus two (-2) competition points.</p> <p>The offending team will be penalised one Try after the first minute and one Try every minute thereafter up to a maximum of five (5) minutes. The time will be judged from the commencement of the game (siren/whistle) to the time when both the teams are ready to commence play.</p>
11.17.6	The Affiliate Coordinator of the offending team will be required to give reasons in writing why their team should not be excluded from participating in any further matches. The NSWTA Competitions Coordinator will decide upon receipt of the report if the offending team's situation warranted the need to forfeit the match. This written report must be submitted to the Competitions Coordinator before the completion of the forfeited match.
11.18	First Forfeit
11.18.1	Penalties apply when Affiliate/Teams forfeit prior to the scheduled time as required in the specific event's Conditions of Entry.

	<p>First Notified Forfeit: The Affiliate will be required to pay the NSWTA \$200 which will then be paid to the Affiliate that has been inconvenienced. This must be paid before any other team from their Affiliate is allowed to participate.</p> <p>First Non-Notified Forfeit: The Affiliate will be required to pay the NSWTA \$500. This penalty must be paid before any other team from their Affiliate is allowed to participate. \$200 of which will be paid to the Affiliate that has been inconvenienced.</p>														
11.19	Second Forfeit														
11.19.1	<p>Second Forfeit The Affiliate must pay the NSWTA \$800 on the second occasion of a forfeit. This must be paid before any other team from their Affiliate being allowed to participate. \$200 of which will be paid to the Affiliate that has been inconvenienced.</p> <p>If a team has two (2) forfeits within the same competition, they will be removed from the competition. Should a team wish to remain in the competition, they must also provide an extensive written explanation to NSWTA detailing reasons why.</p>														
11.20	Forfeit Affected Positions														
11.20.1	<p>If two or more teams finish level on competition points and any of those teams were involved in a forfeited match in the Round Robin Series, the forfeit may cause some obvious problems.</p> <p>When a non-offending team has been involved in a forfeit, the 'for and against' from that forfeit will not count in final calculations. Similarly, for the other teams that finish on equal points, they will have the 'for and against' from that forfeited team deducted from their total. For teams involved in competing against teams on two occasions during the tournament, the calculations for the benefit of this rule will be corresponding game in each round</p> <p style="text-align: center;">EXAMPLE</p> <table style="margin-left: 40px;"> <tr> <td>Team C-</td> <td>Forfeits to Team A in game three (first round)</td> </tr> <tr> <td>Team A-</td> <td>Wins 5 - 0 on forfeit</td> </tr> <tr> <td>Team B-</td> <td>defeats Team C 5 - 1 in game four (first round)</td> </tr> </table> <p style="margin-left: 40px;">If after the Round Robin Series, the 'for and against' is</p> <table style="margin-left: 40px;"> <tr> <td>Team A-</td> <td>50 for and 10 against (plus 40)</td> </tr> <tr> <td>Team B-</td> <td>60 for and 20 against (plus 40)</td> </tr> </table> <p style="margin-left: 40px;">The above results would be deducted first, and the result is: -</p> <table style="margin-left: 40px;"> <tr> <td>Team A-</td> <td>45 for and 10 against (plus 35)</td> </tr> <tr> <td>Team B-</td> <td>55 for and 19 against (plus 36)</td> </tr> </table> <p>Therefore, Team B would gain the higher position.</p> <p>If a forfeit occurs, the non-offending team will be rewarded with a 5 - 0 win and four (4) competition points. The offending team will be penalised minus two (-2) competition points and a loss of 0 - 5.</p> <p>This section only deals with forfeited affected positions for non-offending teams. Teams with forfeit matches will have their calculations treated as normal as they have been penalised by receiving minus two (-2) competition points for the match they forfeited. After the above calculations are made and teams are level on competition points, we shall apply Clause 11.21.</p> <p>NOTE: Forfeits for any reason in the Finals Series negate the forfeiting team's right to participate further in the tournament.</p>	Team C-	Forfeits to Team A in game three (first round)	Team A-	Wins 5 - 0 on forfeit	Team B-	defeats Team C 5 - 1 in game four (first round)	Team A-	50 for and 10 against (plus 40)	Team B-	60 for and 20 against (plus 40)	Team A-	45 for and 10 against (plus 35)	Team B-	55 for and 19 against (plus 36)
Team C-	Forfeits to Team A in game three (first round)														
Team A-	Wins 5 - 0 on forfeit														
Team B-	defeats Team C 5 - 1 in game four (first round)														
Team A-	50 for and 10 against (plus 40)														
Team B-	60 for and 20 against (plus 40)														
Team A-	45 for and 10 against (plus 35)														
Team B-	55 for and 19 against (plus 36)														
11.21	Determining Positions for Finals Series														
11.21.1	The team higher on the ladder will determine positions for Final Series. If teams are equal on points at the completion of the rounds the following measures will be used to decide the higher team.														
11.21.2	1st DIFFERENCES														

	<p>The difference is determined by subtracting the total of Tries scored 'against' from the number of Tries scored 'for'. The team with the best difference will be a higher position.</p> <p>Example - Team A scores 50 for and 10 against (plus 40) Team B scores 40 for and 10 against (plus 30)</p> <p>By subtracting the 'against' from the 'for', Team A would be 'plus 40', whilst Team B would be 'plus 30'. Team A would therefore obtain the higher position.</p> <p>If teams have the same 'difference' the percentage system would then apply.</p>
11.21.3	<p>2nd PERCENTAGES If this system is used, it is easily explained that if the difference is in the 'plus' situation, the team with the least number of Tries scored against them would obtain the higher position.</p> <p>However, if the 'difference' is in the 'minus' situation, the team that has scored the most Tries (for) would obtain the higher position.</p> <p>The percentage system is calculated by placing Try 'for' over Tries 'against' and multiplying by 100 over 1.</p> <p>Using an example: - Team A = $\frac{50}{10} \times \frac{100}{1} = 500\%$ Team B = $\frac{60}{20} \times \frac{100}{1} = 300\%$</p> <p>Team A would obtain the higher position.</p> <p>If the above systems are unable to decide the outcome, the ROUND Game result will be used.</p>
11.21.4	<p>3rd ROUND GAME The team winning the round game would obtain the higher position. If the teams had a draw in the round than ladder adjustments would be required;</p>
11.21.5	<p>4th LADDER ADJUSTMENTS</p> <p>The ladder will be adjusted in the following manner;</p> <ol style="list-style-type: none"> 1. Results removed against the team in last position, then if the ladder is still equal 2. Results removed against the team in second last position, then if the ladder is still equal 3. Results removed against each opposition within the ladder from lowest to highest position until a point of separation
11.21.6	<p>5th DROP OFF If all the above systems are unable to decide the outcome, the DROP OFF will be used.</p>
11.21.7	<p>Cross Pool Determination</p> <p>For some events, teams may be split into uneven pools (i.e. Pool A has 7 teams, Pool B has 6 teams and Pool C has 6 teams).</p> <p>The Points Per Average system may be used to determine which team(s) will be progressing to and within the Finals Series of the relevant tournament.</p> <ol style="list-style-type: none"> a) Points Per Average (Points Per Average is determined by the total competition points accrued divided by number of games played); then b) Differences and Percentages; then c) Ladder Adjustments; then d) Drop Off
11.21.7	<p>Uneven Number of Byes in Competition</p> <p>For week to week competitions where teams have an uneven number of Byes, the final position of a team shall be determined by:</p>

	<p>The Points Per Average (Points Per Average is determined by the total competition points accrued divided by number of games played); then</p> <ol style="list-style-type: none"> a) Differences and Percentages; then b) Ladder Adjustments;
11.22	Final Series
11.22.1	<p>Will be determined by the final number of accepted team nominations.</p> <p>The format for the Final series will not be posted until such time as the draw has been finalised.</p>
11.23	Medical
11.23.1	<p>The NSWTA will ensure medical coverage at all events through our Medical Team.</p> <p>Location of the medical team will be identified on the venue map.</p>
11.23.2	<p>It is recommended that Affiliates should provide adequate medical coverage for their participants.</p> <p>COVID-19 Due to the impact of COVID-19 and adherence to Public Health Orders at the time of an event- the matter of NSWTA provided medical treatment will be advised in the relevant event Conditions of Entry and any COVID-19 addendums advised by the NSWTA.</p>
11.24	Blood Bin
11.24.1	<p>Any player with a bleeding cut or abrasion is to leave the field immediately and have the cut or abrasion cleaned and covered. At this time, any blood stained clothing must also be either cleaned or replaced.</p> <p>If the player does not leave the field immediately, the Referee will stop the game and ask the player to leave the field (normal substitution rules apply).</p> <p>Once the flow of blood has been stemmed, the cut or abrasion cleaned and covered and any blood-stained clothing and equipment cleaned or replaced, the player may return to the field and continue play.</p> <p>If bleeding cannot be controlled and the wound securely covered, the player must not continue in the game.</p>
11.25	Concussion
11.25.1	<p>Touch Football Australia have released the Concussion policy has been developed based on the latest findings from the 2017 Concussion in Sport Group consensus statement and the Sports Medicine Australia Concussion in Sport Policy. This policy has also been developed in conjunction with TFA Medical Coordinator Steve Cunningham and subsequently reviewed and endorsed by Mater Health.</p>



The Touch Football Australia Concussion policy can be found [here](#)

11.26	Force Majeure
11.26.1	<p>A) If NSWTA is unable to perform, in whole or part in any obligation under these regulations of a Force Majeure Event, NSWTA is relieved of that obligation under these regulations to the extent, and the period it is unable to perform.</p> <p>B) In addition to NSWTA has no obligation to refund to any individual or team any fees paid if it is unable to perform by reason of a Force Majeure Event.</p> <p>FORCE MAJEURE EVENT: for the purposes of these regulations a force majeure event includes but is not limited to any or all of the following:</p> <ul style="list-style-type: none"> • Acts of God including flood, drought, earthquake, storm, cyclone, fire, explosion, epidemic, pandemic; or • War or Act of Terrorism; or • Riot or civil disturbances; or • Permanent injunction of any duly constituted court of competent jurisdiction; or • Any fact, circumstance, matter or thing beyond the reasonable control of NSWTA.
11.27	Weather
11.27.1	<p>Weather Affected Matches</p> <p>Rescheduling of Rounds or Matches affected by weather will be moved to the next available timeslots, fields or rounds (where practical). NSWTA reserves the right to organise the affected games in whatever format which will assist the games to occur in as equal conditions as possible.</p> <p>Rescheduling of Matches</p>

	<p>If due to any other extraordinary circumstances that a game cannot be completed to full time, the game may be rescheduled as soon as possible at a time and on a ground arranged by Tournament Management in consultation with both Teams.</p> <p>If the game has commenced, and cannot continue to 50% completion, the following will apply: 1) The game will start from the beginning and must be completed up to the regulation full time. 2) The score will commence at 0-0.</p> <p>Any game that has 50% of time or more completed, the score at that time will be deemed to be the final result of the game.</p> <p>If due to time constraints or any other reason that a game cannot be rescheduled the following will occur: 1) Games that did not continue to 50% completion will be abandoned and a 0-0 score will result.</p> <p>When any type of weather affects a finals series, where games need to be cancelled, the top team in each pool will be awarded joint champions.</p> <p>Note: NSWTA reserves the right to judge and adjust to suit the conditions as required. For events that play in a non-break touchdown turnaround format, half time will be deemed as 50% of the time left in the match.</p>
<p>11.27.2</p>	<p>Hot Weather policy</p> <p>In the event that games need to be rescheduled due to extreme hot weather, please refer to Clause 11.27.1.</p> <p>Games will not commence if the temperature exceeds 38 degrees, games will be postponed until such time that the temperature decreases.</p> <p>If the temperature reaches 35 degrees, any games underway will be completed and any subsequent games will be played as halves, thirds or quarters with a 2 minute break between periods. Refer to the Conditions of Entry for that event.</p> <p>NSWTA will return to the regular format, guided by a drop in temperature back below 35 degrees.</p> <p>For more information, please view NSWTA Hot Weather Policy</p>
<p>11.27.3</p>	<p>Cold Weather policy</p> <p>In the event that games need to be rescheduled due to extreme cold weather, please refer to Clause 11.27.1.</p> <p>Local weather reports will be monitored when severe weather is forecast. If the temperature drops below 8 degrees and ground is deemed to be excessively slippery from frost, snow, rain or mud, it is at the discretion of the NSWTA to determine whether play should be suspended or postponed until the conditions improve.</p> <p>For more information, please view TFA Cold Weather Policy</p>
<p>11.27.4</p>	<p>Air Quality</p> <p>In the event that games need to be rescheduled due to air quality, please refer to Clause 11.27.1.</p> <p>The air quality may vary throughout an event due to pollution (such as caused by bushfires) in the region. As such, NSWTA will continue to monitor air quality. All participants including players, referees and spectators need to be aware that we will have measures in place to either alter playing conditions, the draw or to postpone/cancel games should we feel that it is necessary. If conditions at any time are deemed dangerous, due to smoke or fire, the NSWTA will act accordingly.</p> <p>Participants with chronic health problems, particularly respiratory and cardiac, need to consider the risks of</p>

	<p>playing in a smoke-filled environment. The NSWTA encourages all players, and their families, to consider the health risks associated with exercising in a smoke-filled environment. If anyone is participating and starts getting symptoms, they should be brought off the field immediately and given medical attention.</p> <p>TFA Air Quality Guidelines</p>
--	--

SECTION 12: RULES

12.1.1	<p>The NSWTA conduct events under the auspices of the Touch Football Australia 8th Edition rule book, the General Conditions of Entry as well as that event's Conditions of Entry. The NSWTA will review the Touch Football Australia 8th Edition rule book for adoption when completed.</p> <p>The NSWTA also have variations of these rules which are outlined in this section.</p>
12.2	<h3>Drop Off Procedure</h3>
12.2.1	<p>NSWTA will utilise the following procedure for any drop off in a NSWTA event unless otherwise specified in the events Conditions of Entry.</p> <p>The Drop Off Procedure is that of the 8th Edition Rules, (rule 24) A summary is provided herewith.</p> <ul style="list-style-type: none"> • Each Team commence with four (4) players and within 60 seconds take up a position to restart play from the Halfway Line, defending the same end of the field as at the End of Play. • The Drop-Off commences with a Tap from the centre of the Halfway Line by the Team that did not commence the match with Possession. • A two (2) minute period of extra time is played. • Should a Team be leading at the expiration of the two (2) minute period of extra time then that Team will be declared the Winner and Match complete. • Should neither Team be leading at the expiration of two (2) minutes, a signal is given and the match will pause at the next Touch or Dead Ball. Each Team will then remove a player from the Field of Play. • The Match will recommence immediately after the players have left the field at the same place where it paused (i.e. the Team retains Possession at the designated number of Touches, or at Change of Possession due to some Infringement or the sixth Touch) and the Match will continue until a Try is scored. • There is no time off during the Drop-Off and the clock does not stop at the two (2) minute interval. • Substitution during the Drop-Off is permitted in accordance with normal Interchange Rules. • Mixed gender Teams may have no more than (2) males on the field during the Drop-Off. • In the case of a male player serving time in the Sin Bin at the commencement of the Drop-Off the offending Team will start with no more than one (1) male on the field. • Where a male player has been dismissed for the remainder of the match, the offending Team will be permitted to have no more than one (1) male on the field for the duration of the Drop-Off. • At the commencement of the Drop-Off, if there is a player serving time in the Sin Bin and is yet to complete the required time, their Team commences the Drop-Off with one (1) less player on the field than their opposition and continues to play with one (1) player less until the Sin Bin period has been completed. • At the commencement of the Drop-Off, if a Team has had a player dismissed for the remainder of the match that Team continues to play with one (1) player less than the opposition Team for the duration of the Drop-Off. For the avoidance of doubt the non-offending Team will retain a numerical advantage on the Field of Play during the Drop-Off.
12.2.2	<p>NB. "Drop Offs" may not be used in all NSWTA events. The Conditions of Entry for an event will confirm if the "Drop Off" is being utilised.</p>
12.3	<h3>Substitution and Interchange Area</h3>
12.3.1	<p>All interchanges must occur at or within the team's interchange area, and only after the substituted player has crossed the boundaries and entered the Interchange area. All interchanges must be made on one side of the field and without delay.</p>

	<p>Physical contact is not necessary between interchanging players. Players leaving or entering the field shall not hinder or obstruct play and must enter from an onside position. Following the scoring of a Try whilst the play is dead, players may interchange at will without having to wait for the substituted player to enter the interchange area.</p> <p>RULING (Rule 17)- A Penalty to the non-offending Team at the point of the Infringement.</p>
12.3.2	<p>The only personnel allowed in the interchange will be the fourteen (14) registered players plus four (4) team management officials that are nominated on the Registration Sheet. That is a maximum of eighteen (18) people (this includes those players partaking on the field).</p> <p>Authorisation from NSWTA tournament control must be gained prior to the event for any other person(s) to be in the sub box area (includes extra officials such as a certified medical professional). Any personnel not complying with the uniform regulation will be requested to leave the sub box by tournament officials.</p> <p>N.B Any player found to have left the sub box to become involved in a melee, brawl or fight may be dealt with in the following way. If in the referees view a player/s or official/s leaving the sub box engages in illegal play that would under normal circumstance of general game play warrant being sent off, they should do so. This will incur a minimum four (4) match suspension on top of any further suspension handed down by the judiciary.</p> <p>If in the referees view a player/s or official/s leaving the sub box engages in <u>activities</u> that would not under normal circumstance of general game play warrant being sent off, they should:</p> <ul style="list-style-type: none"> • Record the number of the player(s) leaving the sub box to become involved in a melee or brawl or fight, • Advise the captain that they will report those players to NSWTA • File a report at the end of the game noting those players for the NSWTA to take action <p>The action of leaving the sub box to become involved in a melee or brawl or fight will be an automatic 4 match suspension.</p> <p>COVID-19 Due to the impact of COVID-19 and adherence to Public Health Orders at the time of an event- the matter of on sub boxes, who can be in and or substitution process will be advised in the relevant event Conditions of Entry and any COVID-19 addendums advised by the NSWTA.</p>
12.4	Coach and Referee Communication- Mutual Respect Policy
12.4.1	All members be they Referees, Coaches, Players, Office-bearers and/or spectators have an obligation to be conversant with this protocol and both the NSWTA and TFA member Protection Policy. Please refer to the Mutual Respect Policy.
12.4.2	Referees are instructed to no longer engage with the player, coach, manager or official and will walk away from any possible confrontation reporting the same to the NSWTA.
12.4.3	The signing of the referee's card will only take place by the managers of the teams. In the absence of Managers for open/senior teams, the captains will be responsible for this. Should either try to engage the referees in discussion about the game or decisions in the game, the referees will immediately stop those discussions and direct the Manager to the Tournament Control. Any dispute of the score must be raised in writing at Tournament Control.
12.4.4	All need to be advised that rule 20- Misconduct will remain in force. Referees have been instructed not to tolerate abusive behaviour from the Interchange Area during the game, and deal with it appropriately should it take place, by removing a player from the field.
12.4.5	A player, coach, manager or official may not agree with the way a referee officiates a game, nor may he/she agree with decisions made, however there are proper procedures and avenues to handle such matters. Approaching referees after the game is not the measure we allow . We do however welcome feedback, reports or consultation under the proper guidelines.
	Should you have an issue with a performance of a referee you may:

	<ul style="list-style-type: none"> a) Consult, in a calm manner, with a State Referee Panel member. b) If necessary, they will orchestrate a meeting with the referee, coach and panel member. c) Disputes or feedback are to be placed in writing and forwarded to the Tournament Manager at tournament control.
12.4.6	Breaches of the Mutual Respect Policy can incur a suspension and will be imposed under the control of the event. It may also lead to possible fines for both the individual and affiliate . Further to this they may find themselves before a judiciary whereby the penalties may be imposed.
12.4.7	<p>The Board under the auspices of the Technical Director and Referees Director have a clear view to have coaches, players and referees all working in the same direction, however incidents of abuse and confrontational behaviour that may escalate cannot be allowed to continue. Hence the Mutual Respect Policy has now been engaged and put in place.</p> <p>The onus is on the Affiliate Coordinator and the Affiliate to ensure all personnel are aware of this policy. Ignorance of the same will not be accepted as a defence.</p>
12.4.8	<p>Coaching Positions: The only people that are allowed behind the score line are the Coach or Assistant Coach or Manager. A Coach may position themselves at the end of a field. If they are at the end of the field they must remain at least five metres behind the dead ball line. Where a fence, spectator line or advertising signage prevents this they must remain behind the fence or advertising signage.</p> <p>Any Coaching/Management staff at the end of a playing field cannot issue any verbal or physical commands directly to the team they are observing and can only communicate to the team or other coaching/management staff in the interchange area by returning to the interchange area or by use of electronic communication equipment. Any person found to be disregarding this tournament rule will be asked to return to the interchange area. Coaches are reminded that they are under the jurisdiction of the Tournament Conditions, NSWTA Officials and the referees regardless of being either in the interchange area or at the end of the field.</p> <p>Failure to comply with this will result in individuals being asked to leave the venue for the duration of the game and may result in further action.</p>
12.5	Send Offs
12.5.1	Any player sent from the field for the remainder of the game will receive an automatic two (2) match suspension unless the Judiciary or Disciplinary Committee considers further action.
12.6	Sin Bins
12.6.1	Any player who receives two “sin bins” throughout the tournament (not in the same game), will receive an Automatic one (1) match suspension. Every subsequent sin bin will receive an automatic one (1) match suspension. For the alteration in relation to the Vawdon Cup please refer to the Vawdon Cup Conditions of Entry.
12.6.2	<p>A player who is dismissed for two “sin bins” in the one game will be dealt with in the following manner:</p> <ul style="list-style-type: none"> a) Should the referee deem that both “sin bins” are not of a nature to warrant further suspension, the player, on the second offence will be sent to the end of the field for the remainder of the game, NO FURTHER action will take place. b) Should the referee deem the combined incidents serious enough, the player on the second offence will be sent from the field of play. In this instance the player will receive an automatic one (1) match suspension.
12.6.3	A one (1) or two (2) match suspension is to be served on the following one (1) or two (2) games in which the team actually plays. Byes do not count as a game played. A team that wins by a forfeit will count, however a team losing by forfeit, will not.
12.6.4	A sin bin applied to a player for a team offence will not be registered against an individual.

SECTION 13: PROTEST, DISPUTES and DISCIPLINE

13.1.1	<p>Protest and Dispute matters will be heard and determined by either the Appointed Tournament Official or if required the NSWTA Judiciary Panel as appointed by the NSWTA.</p> <p>All Judiciary matters will be handled via the NSWTA Disciplinary Policy. Any hearings will be heard in accordance with the TFA Disciplinary Regulations.</p>
13.1.2	<p>Protests and Disputes must be lodged in writing within 60 minutes of the conclusion of the event/game in question to the Competition Coordinator or to an official designated by the General Manager. At this time the Protest and Dispute will be assessed and determinations made.</p>
13.1.3	<p>The protest is to be lodged and signed by the Affiliate Coordinator.</p>
13.1.4	<p>The protest will then be investigated by the delegated authority and their decision will be returned, to the Affiliate Coordinator.</p> <p>Any notice to be served on any person to attend a hearing must be served on the Affiliate Coordinator and any such service is deemed to be served on all parties or persons under the control of the Affiliate Coordinator.</p>
13.1.5	<p>NSWTA reminds all parties that the following issues will not be open to appeal and or protest and therefore formally advises all teams that they must be aware of this prior to the commencement of games:</p> <ul style="list-style-type: none"> • The Referee is the sole judge on all match related matters inside the Perimeter for the Duration of a match, has jurisdiction over all players, coaches and officials. • A team found playing an unregistered player will be disqualified.
13.1.6	<p>If a team does not agree with the score on the score sheet, they are to lodge a protest. The following information is to be provided with the protest:</p> <ul style="list-style-type: none"> • Who tapped off • The order the scoring occurred (including player numbers of both teams) • The half time and full time score • The NSWTA issued score sheet <p>The opposing team will be called to verify the score. If they do not agree or in the event of inconclusive evidence the score will be recorded as the score that the Referees have recorded.</p> <p>Alternatively, video evidence can be provided and the evidence will be used if conclusive.</p>
13.1.7	<p>All players sent from the field for the remainder of the game will be dealt with via the NSWTA Disciplinary Policy and may be required to appear before a NSWTA Judiciary or Disciplinary Hearing the NSWTA <u>Disciplinary Policy and Procedure allows for the individual to take an early acceptance rather than appearing before a Judiciary Hearing.</u></p>
13.1.8	<p>Any Player, Official or other Member of an Affiliate who is the subject of a complaint or report may be dealt with via the NSWTA Disciplinary Policy and may be required to appear before a NSWTA Judiciary or Disciplinary Hearing.</p>
13.1.9	<p>In the case of a player being dismissed from the field of play for the remainder of the game the team manager is required to report to the Tournament Control Area no later than 30 minutes after the game from which the player was dismissed where they may be issued with a Notice of Hearing outlining details of the Disciplinary Hearing and a copy of the written complaint or report.</p> <p>The procedures for each event are covered in their Conditions of Entry.</p>

13.1.10	<p>Disciplinary Hearings will be conducted at the earliest possible convenience after provision of the report is handed to the team manager who will be responsible for passing the paperwork onto the player concerned.</p> <p>In the case of a complaint or report being submitted on a player, official or other member, the NSWTA official will contact Affiliate Coordinator who will be issued with a Notice of Hearing outlining details of the Disciplinary Hearing and a copy of the written complaint or report.</p> <p>The procedures for each event are covered in their relevant Conditions of Entry.</p>
13.1.11	<p>It is the responsibility of each Affiliate Coordinator to ensure that all their players, officials and teams behave themselves during the competition. The Member Protection Policy is inclusive in all participant registration and is available from www.nswtouch.com.au</p>
13.1.12	<p>On any written complaint that is made to the Competitions Coordinator, Business Operations Manager, General Manager or NSWTA Board of conduct which is prejudicial to the interests or welfare of the Association, its Administration, the game of Touch or on the part of any Member of the Association, the General Manager and or the Board shall have the power to deal with such complaint and in the exercise of the power hereby conferred may disqualify, suspend, fine or otherwise deal with any person or body they find to have been guilty of such conduct.</p> <p>This power also extends to an official of the NSWTA citing an incident of conduct prejudicial to the sport of touch.</p>

SECTION 14: SPONSORSHIP AND LOGO DISPLAY

14.1	Affiliate Uniforms
	<p>All logos and sponsors names on the uniforms or dress gear must be of a size, quality and design standard acceptable under the NSWTA Uniform Guidelines.</p>
14.2	Other Usage of Logos & Banners
	<p>Usage of the NSWTA and NSWTA Sponsors is encouraged however authorisation of any usage must be obtained from NSWTA.</p> <p>Any public display of an Affiliates logo and or their partners must receive express permission of the NSWTA prior to the event.</p> <p>Penalty: \$500 maximum per breach.</p> <p>N.B Sponsors and or partners that directly conflict NSWTA partners at NSWTA events will not be granted display permissions.</p>

SECTION 15: MERCHANDISING

15.1.1	The Merchandising of the NSWTA events will be the responsibility of NSWTA and its suppliers.
15.1.2	No affiliate, their sponsor or any third party can sell or provide merchandise at or to an NSWTA event without the express written consent of the General Manager of the NSWTA.

SECTION 16: TRAVEL ARRANGEMENTS

16.1	Travel is to be arranged by the Affiliate and their members.
------	--

SECTION 17: DOPING POLICY

17.1.1	<p>The NSWTA is under the TFA Doping Policy this will be enforced at NSWTA events. The Australian Sports Anti-Doping Authority (ASADA) could (in accordance with their policy) random test any participant. Any indiscretions found will incur the penalties as prescribed in the TFA Doping Policy. This information can be obtained from the TFA Website.</p>
--------	---

SECTION 18: BREACHES OF RESPONSIBILITY

18.1.1	<p>In the event that a participant or Affiliate breaches any responsibility as set down in the General Conditions or Conditions of Entry documents that participant or Affiliate will be required to explain the Breach to a duly convened meeting of the Board or their representative, namely the General Manager.</p> <p>In accordance with the NSWTA Constitution the penalty that may be applied through the power hereby conferred may disqualify, suspend, fine or otherwise deal with any person or body they find to have been guilty of such Breach.</p> <p>Any rule breach not mentioned in this document will be subject to a fine as determined by the Board or their representative, namely the General Manager.</p> <p>Any appeal against the determinations of the Board or their representative, namely the General Manager are to be lodged with the with an appeal fee of \$200. Such appeal fee will be refundable upon the appeal being upheld.</p>
---------------	--

SECTION 19: RECOMMENDATIONS

19.1	All Affiliates are encouraged to have their players sign a Player's Agreement. The Players Agreements should include the following clauses.
19.1.1	To market themselves professionally and to allow the Affiliate and the NSWTA to use their reputation.
19.1.2	To attend all Affiliate functions and promotions whether they are related to the playing of Touch or not. Non-attendance by mutual agreement is acceptable.
19.1.3	Not to negotiate with another Affiliates regarding future seasons without the consent of the current Affiliate.
19.1.4	To give media interviews on request, but only on game results etc, any administration queries to be directed to the Affiliate or NSWTA.
19.1.5	To maintain themselves in top physical condition.
19.1.6	To wear such clothing as the Affiliate determines.
19.1.7	To liaise with the Affiliate in regards to all injuries and insurance matters.
19.1.8	The player's current Affiliate are to be given first option at retaining themselves services as a player. (Agreements are for no less than twelve months)
19.1.9	To abide by all the rules as set by the Affiliate and NSWTA.
19.1.10	Not to negotiate with another Touch league/organisation without the written permission of the NSWTA and the Affiliate.
19.1.11	All parents and guardians agree to abide by NSWTA rules and regulations within the Parent and Guardian Agreement.

SECTION 20: COVID-19

20.1	The NSWTA reserves the right to change, alter or adjust the General Conditions and any specific Event Conditions at any time due to any COVID-19 intervention or changes to Public Health Orders that effect the running of any competition.
-------------	---

This is to both ensure we remain compliant with NSW Health regulations and the safety and wellbeing of all our members, participants, and the wider community.

SECTION 20: POLICIES

Item 1: Member Protection Policies

Member Protection is a significant issue both within the community and within the sports environment. NSWTA has a moral responsibility to ensure we are remaining valid and current with Member Protection issues related to the members of NSWTA.

One initiative that TFA and NSWTA is has adopted as an education process on the issue is 'Play by the Rules' program available at www.playbytherules.net.au This website has a number of interactive courses that coaches and officials can undertake to learn more about Member Protection. Below is the statement from the home page of the Play by the Rules website.

Play by the Rules provides information and online learning about how to prevent and deal with discrimination, harassment and child abuse for the sport and recreation industry.

Play by the Rules is a partnership between the Australian Sports Commission and all State/Territory sport and recreation and anti-discrimination agencies. The information on Play by the Rules is not intended to be, nor should it be relied upon as, a substitute for legal or other professional advice.

NSWTA will encourage each official attending NSWTA events to complete the online course and supply to their Affiliate a certificate of completing the course. The course is relatively easy, informative and takes limited time to complete. The printed certificate would be submitted at the Tournament Briefing with the other required documentation. The certificate can be supplied and then a register can be maintained for future events, therefore the ongoing requirement would be for new officials each event. We hope that you find value in this initiative as we all work towards providing an environment that is both positive and safe for all participants.

Item 2: Legal Guardianship Issues

Legal Guardianship is the responsibility of the Affiliates. In some instances, persons under the age of 18 will be in attendance at the event. In understanding our expectations around your role and responsibilities we provide Affiliates some additional information related to legal guardianship.

This communication contains general advice only and does not take into account individual objectives, circumstances and or a legal view. The information contained in this communication is only to offer some additional information on this particular area and individual research and advice should be sort for your personal circumstance.

Guardians – A guardianship is a legal right given to a person to be responsible for the food, health care, housing, and other necessities of a person deemed fully or partially incapable of providing these necessities for himself or herself.

What Are a Guardian's Duties?

The guardian makes decisions about how the person lives, including their residence, health care, food, and social activity. The guardian is intended to monitor the person, to make sure that the person lives in the most appropriate, least restrictive environment possible, with appropriate food, clothing, social opportunities, and medical care.

Communication with the Parents

Ensure you are informed of any medical concerns, including food allergies. In addition, you'll need to agree on things like sleeping arrangements, the administration of over-the-counter medications, and procedures for contacting the parents in an emergency.

Information provided and acknowledged from the following websites:

http://www.expertlaw.com/library/estate_planning/guardianship.html

<https://www.verywellfamily.com/temporary-guardianship-forms-2997661>

Item 3: Supervision of Under Age Players	
	<p>Entities are to be reminded that they are responsible for the direct supervision of any player or official who is under the age of 18 years old. All steps should be under taken by an Entity to protect these person's from all forms of harassment.</p> <p>These minors must be made fully aware of the NSWTA & TFA Codes of Conduct.</p> <p>All officials comply with the relevant child protection laws.</p> <p>That when travelling to, during and from the tournament all care is taken to supervise minors.</p>
Item 4: Child Protection	
	<p>All Affiliate Coordinators will be responsible for making sure all touring staff and volunteers involved with under 18's are compliant with the Working with Children Checks laws in their relevant State.</p> <p>It is the responsibility of the Affiliate to collect this information from staff or volunteers, keep on record and check that the card is valid, before they enter New South Wales.</p>
Item 5: Water Safety	
	<p>Water Safety Many Affiliates use ice baths for their athletes and there are also a number of young children that may attend an event. Therefore, it is vital that proper supervision occurs and that an adult always watches children around water, because drowning can occur in less than a minute, and without you hearing a thing.</p> <p>It is vital that proper supervision occurs and that an adult (18 years old and older) always watches children of all ages around water. Adults should be actively supervising and within arm's reach because drowning can occur in less than a minute with no sound. Even when children can swim, 100% supervision is the key to preventing drowning (a leading cause of injury-related death/0). Children can drown in as little as 5cm of water. Remove any containers with water in them and make sure children cannot access any bodies of water on their own.</p>
Item 6: Food Handling	
	<p>Many Affiliates and teams arrange lunches or snacks for participants during their touring levies and or pooling groceries and food. It is important to note that handling food for groups can be a major risk factor with food poisoning or spoiling. NSWTA reminds Entities that they need to have processes and policy around the individuals that are responsible for these aspects. Please visit www.foodstandards.gov.au for more information.</p>
Item 7: Images, Video Footage & Social Media	
	<p>All persons accept that, by participating in this event, they may be photographed/filmed and that these images may be used by the NSWTA for promotion of the sport. The NSWTA will not pass any image/s onto a third party unless prior approval is sought. If you do not wish the NSWTA to be able to use your image/s or be filmed you must notify NSWTA in writing.</p> <p>NSWTA reserves the right to take immediate possession of any video footage taken at an NSWTA event that may assist the NSWTA in investigating any matter of judiciary, discipline or protest. All care of equipment, tape and data cards will be taken and returned to the owner upon determination of the judiciary, disciplinary hearing, or protest.</p> <p>With the rise in use of social media, NSWTA has regulations around the filming and or photography of players and games at events. To protect the privacy and images, anyone filming and photographing games or players will be required to be registered with and be APPROVED by NSWTA to have permission to film. In allowing photography/videography applicants must comply with relevant clauses and conditions set out by the NSWTA around the use of the footage/photos.</p>

	<p>Affiliates must make application to the NSWTA prior to the event for any official photographer/videographer and acknowledge along with the approved applicant that images/film MUST NOT be passed on to a third party unless prior approval is sought and granted.</p> <p>Approved applicants must report to Tournament Control prior to the commencement of the event to be issued with a NSWTA Official photographer vest that must be worn at all times while engaged at the event. Non-compliance will result in credentials and permissions immediately removed.</p> <p>All approved photographers and videographers must provide ALL images to NSWTA.</p>
<p>Item 8: Unaffiliated Rule</p>	
	<p>The following rule applies to players who have or are participating in any unaffiliated competition since the beginning of 2021.</p> <p>Anyone found participating in an unaffiliated competition, without the consent of the NSWTA General Manager cannot compete in a NSWTA tournament for a period of 12 months.</p>